

2023  
KALENDER  
CALENDARS







## Inhalt - Contents

EIGENSCHAFTEN VON KALENDERN / CHARACTERISTICS OF CALENDARS .....	3
BINDUNGSOPTIONEN DER KALENDER / BINDING OPTIONS OF CALENDARS .....	3
EXCLUSIVE EDITION .....	4
Above the City .....	11... N263-23
Alfons Mucha .....	9... N259-23
Aqua Dreams .....	15... N271-23
Geo Art .....	14... N265-23
Girls Exclusive .....	16... N273-23
Charm of the Moment .....	19... N277-23
Impressionism .....	7... N255-23
Leonardo da Vinci .....	6... N251-23
Live Design .....	10... N260-23
Men .....	19... N276-23
Music Experience .....	8... N258-23
Panoramaphoto .....	10... N261-23
Playboy .....	17... N274-23
Sailing .....	14... N268-23
Urbex - Forgotten Places .....	13... N267-23
Wildlife .....	12... N264-23
Women .....	18... N275-23
Women Exclusive .....	16... N272-23
WANDKALENDER / WALL CALENDARS .....	20
Alps .....	29... N138-23
Aqua .....	42... N166-23
Art Naive .....	36... N150-23
Beach Girls .....	43... N172-23
Black Red .....	34... N146-23
Bridges .....	25... N129-23
Cars .....	38... N153-23
Colour Art .....	34... N148-23
Europe .....	22... N123-23
Flirt .....	40... N163-23
Forest .....	42... N165-23
Gardens .....	25... N130-23
Golf .....	28... N135-23
Good Old Bikes .....	38... N154-23
Herbarium .....	32... N144-23
Horses .....	36... N152-23
Hot Girls .....	41... N161-23
Kittens .....	43... N170-23
Landscapes .....	24... N128-23
Magic Flowers .....	33... N145-23
Modern Architecture .....	22... N124-23
Mountains .....	23... N126-23
National Parks .....	26... N132-23
Nature Emotions .....	29... N140-23
Provence .....	31... N142-23
Puppies .....	43... N171-23
Retro Cars .....	39... N158-23
Romantic Corners .....	33... N147-23
Romantic Scenery .....	35... N149-23
Sea .....	28... N131-23
Sexy Boys .....	40... N180-23
Spicy .....	30... N139-23
Sweet Home .....	32... N143-23
Top Girls .....	41... N162-23
Trains .....	37... N157-23
Trees .....	23... N125-23
Tropical Beaches .....	31... N141-23
Trucks .....	39... N155-23
Via .....	27... N133-23
Waterfalls .....	24... N127-23
World from Above .....	28... N137-23
World Wonders .....	27... N134-23
TISCHKALENDER / TABLE CALENDARS .....	44
Mini Kittens .....	44... SM20-23
Mini Puppies .....	44... SM21-23
KARTONS / BOXES .....	45
30 x 60 KALENDER / CALENDARS .....	46
Animal Friends .....	49... LP04-23
Cats .....	48... LP01-23
Dogs .....	48... LP02-23
Family Planner .....	53... LP200-23
Gardens .....	52... LP10-23
Hearts .....	51... LP07-23
Horses .....	49... LP03-23
Hygge .....	52... LP09-23
Little Fun .....	50... LP05-23
National Parks .....	50... LP06-23
Provence .....	51... LP08-23
NOTIZBÜCHER / NOTEBOOKS .....	54
Black Red * Double Blue * Black Green .....	64
Black White * Black Orange .....	65
Double Violet * Double Black .....	65
Flexies Notebooks .....	62
Flip Notebooks .....	60
3D MODELL - MALBUCH / 3D COLORING MODELS .....	66

## Eigenschaften von Kalendern/Characteristics of Calendars



### FSC-zertifiziert

Der Kalender wurde auf FSC-zertifiziertes Papier gedruckt, womit der Förderung einer umweltfreundlichen, sozialförderlichen und ökonomisch tragfähigen Bewirtschaftung von Wäldern hilft.

### FSC certified

The calendar is printed on FSC certified paper thus helping and promoting responsible management of the world's forests.



### Lieferung in Folie

Jeder Kalender wird separat in einer Folie ausgeliefert.

### Delivered in a foil

Each calendar is delivered packaged in foil.



### Kartons

Elegante Kartons passend für jeden Kalender.

### Boxes

Elegant cardboard boxes to go along with each calendar.



### Exclusive Edition

Wählen Sie Materialien, große Formate, exklusive Fotos, originelle Kalender, mit einem Schwerpunkt auf Neuem.

### Exclusive Edition

Select materials, large formats, exclusive photographs, original calendars, with an emphasis on new things.



### Lieferung in einer Tasche

Jeder Kalender wird in einer speziellen Tasche ausgeliefert.

### Delivered in a bag

Each calendar is delivered packaged in a special bag.



### 10 Stück pro Karton

Die Kalender werden in praktischen Kartons verpackt, um die Handhabung zu vereinfachen.

### In boxes of 10 pieces

Practical calendar packaging for easier logistics.

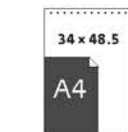


### Das Produkt ist patentiert.

The product is patented.



PATENTIERT  
PATENTED



### Verhältnis zu A4

Weist das Verhältnis jeder Dimension eines Kalenders in Bezug auf das Format A4 aus.

### Ratio to A4

Indicates the ratio of each dimension of a calendar in relation to the A4 format.

## Bindungsoptionen der Kalender/Binding options of calendars

### N271-23 (STANDARD)



- Wire -O- Bindung
- 14 Seiten (Titelblatt + 12 Monatsblätter + Rückwandkarton + Übersichtsblatt)
- PP-Tasche mit Handgriff
- 7 cm für Werbeaufdruck
- 10 Stück pro Karton
- wire-O binding
- 14 pages (cover + 12 months + cardboard + overview)
- PP bag with a handle
- 7 cm for imprint
- 10 pcs in a carton

### N271-23-R (RETAIL)



- Wire -O- Bindung
- 14 Seiten (Titelblatt + 12 Monatsblätter + Rückwandkarton + Übersichtsblatt)
- in PP-Beutel eingesteckt
- 10 Stück pro Karton
- wire-O binding
- 14 pages (cover + 12 months + cardboard + overview)
- inserted in PP-bag (closed)
- 10 pcs in a carton





DIE EXCLUSIVE EDITION-KOLLEKTION  
IST KEIN GEWÖHNLICHER KALENDER.  
ES IST EIN KUNSTWERK.



THE EXCLUSIVE EDITION COLLECTION  
IS NOT AN ORDINARY CALENDAR.  
IT IS ART.





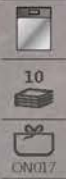
N251-23

Leonardo da Vinci

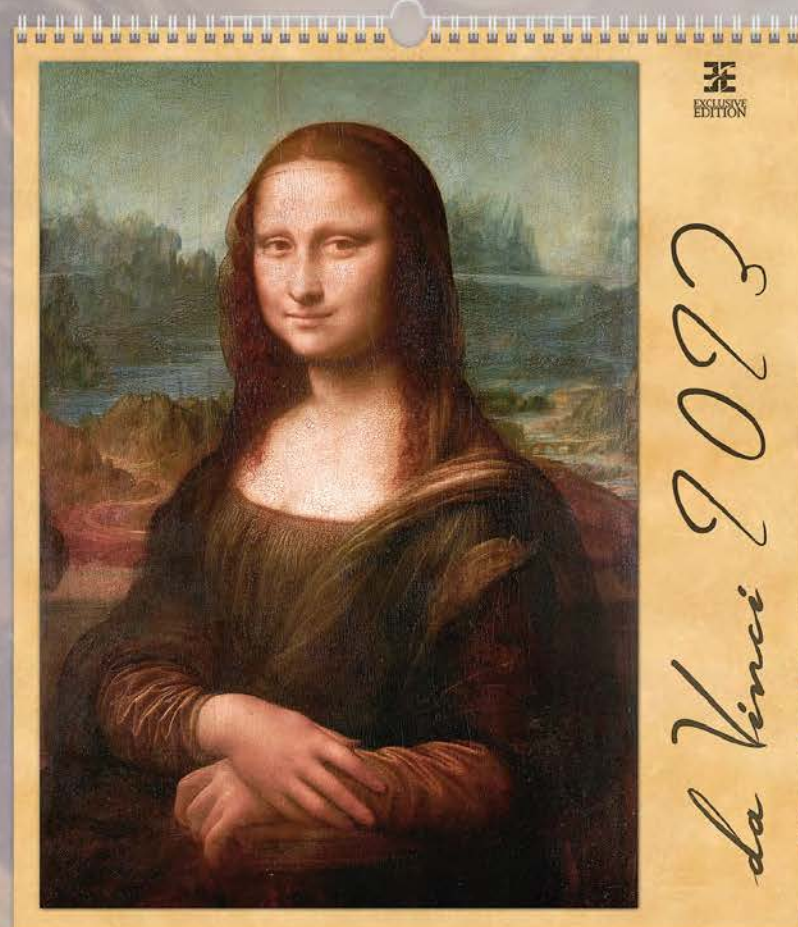
45 x 52 cm

14 BLÄTTER / SHEETS

MONATSKALENDER INTERNATIONAL / MONTHLY INTERNATIONAL CALENDAR



45 x 52  
A4



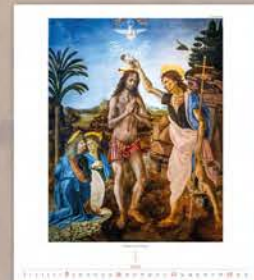
LOGO: 45 x 7 CM



MADONNA OF THE TORRENOVA

V

2023



N255-23

Impressionism

45 x 52 cm

14 BLÄTTER / SHEETS

MONATSKALENDER INTERNATIONAL / MONTHLY INTERNATIONAL CALENDAR



45 x 52  
A4



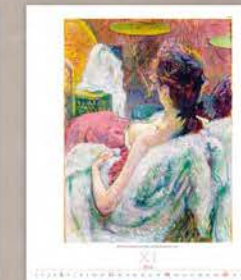
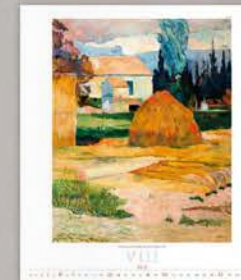
LOGO: 45 x 7 CM



THE DAY AFTER TOMORROW

VI

2023

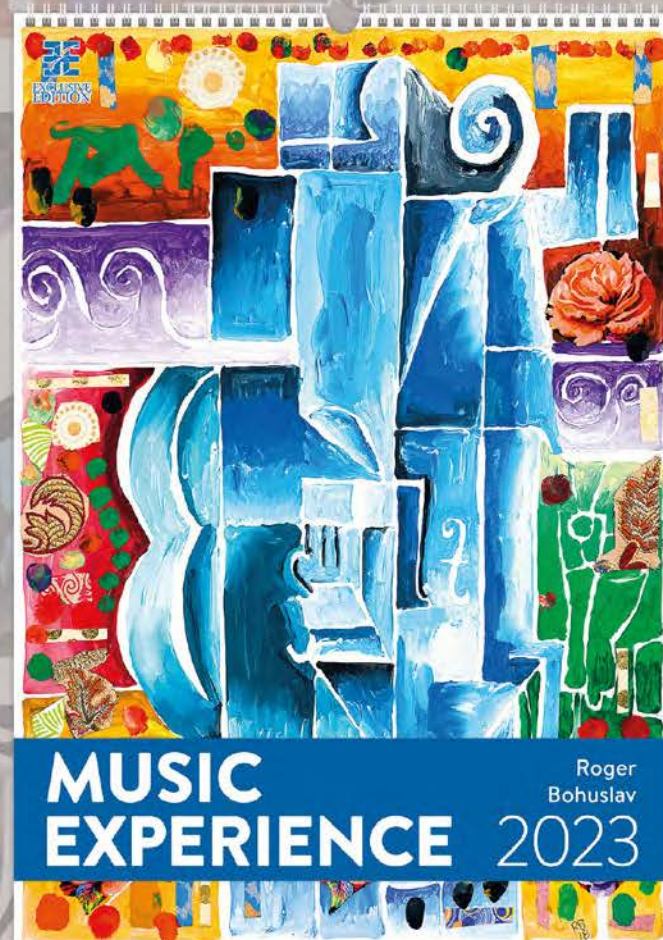




N258-23

Music Experience ROGER BOHUSLAV

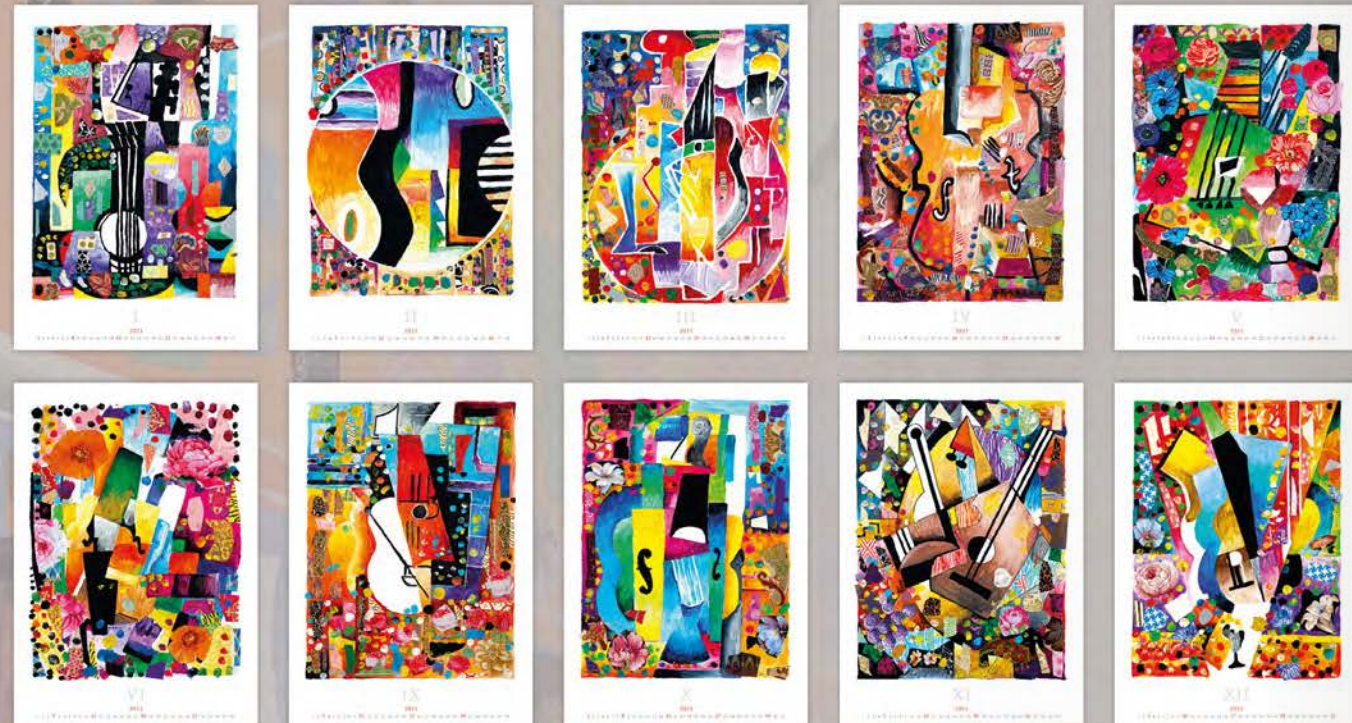
34 x 48,5 cm  
14 BLÄTTER / SHEETS  
MONATSKALENDER INTERNATIONAL / MONTHLY INTERNATIONAL CALENDAR



LOGO: 34 x 7 CM



1 2 3 4 5 6 7 8 9 10 11 12 13 14 15 16 17 18 19 20 21 22 23 24 25 26 27 28 29 30 31

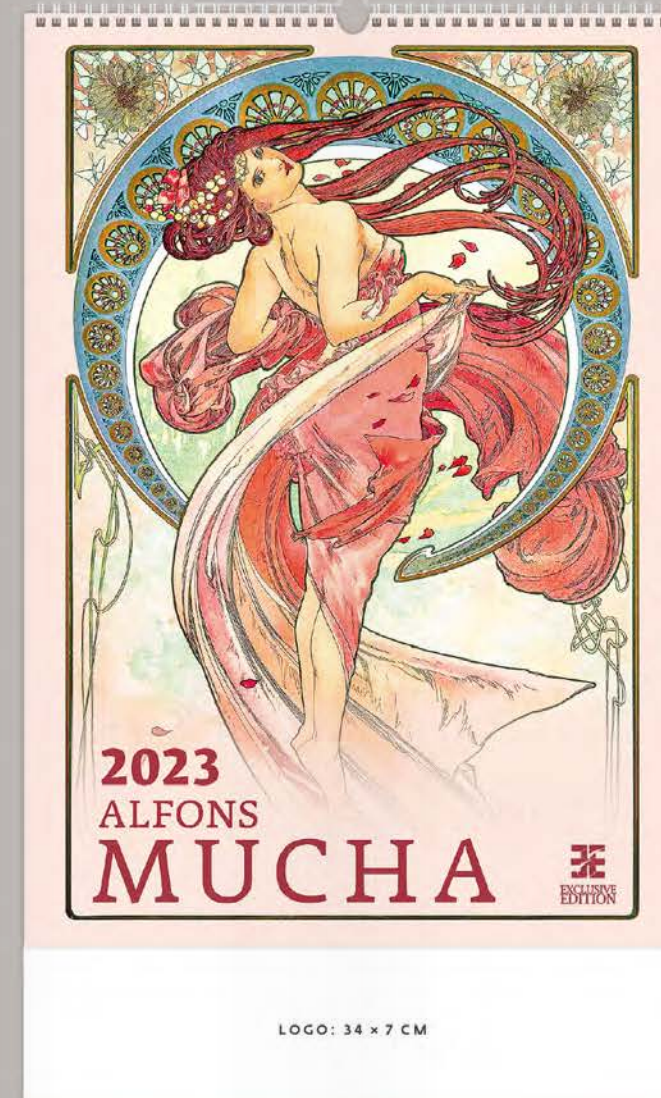


NEU NEW 2023

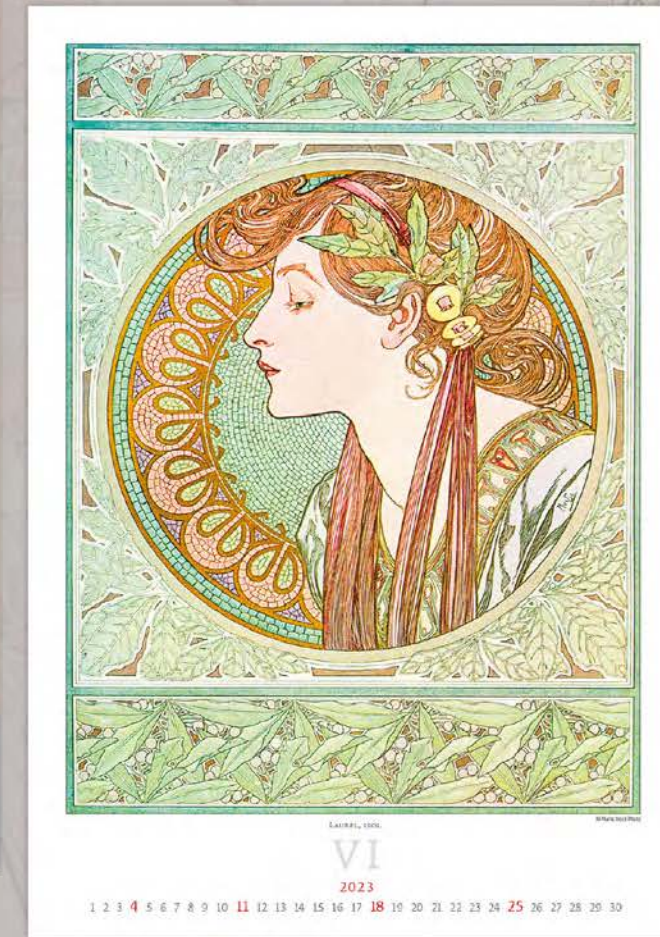
N259-23

Alfons Mucha

34 x 48,5 cm  
14 BLÄTTER / SHEETS  
MONATSKALENDER INTERNATIONAL / MONTHLY INTERNATIONAL CALENDAR



LOGO: 34 x 7 CM



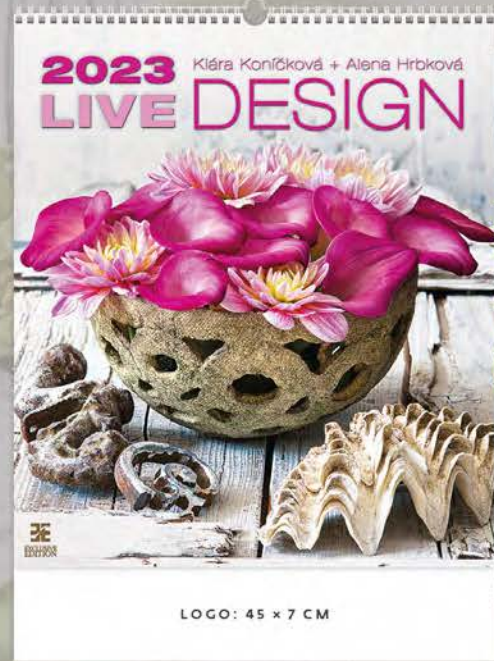
1 2 3 4 5 6 7 8 9 10 11 12 13 14 15 16 17 18 19 20 21 22 23 24 25 26 27 28 29 30





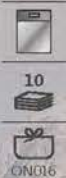
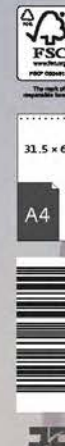
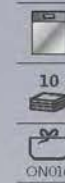


**N260-23**  
**Live Design** ALENA HRBKOVÁ + KLÁRA KONÍČKOVÁ  
 45 x 52 cm  
 14 BLÄTTER / SHEETS  
 MONATSKALENDER INTERNATIONAL / MONTHLY INTERNATIONAL CALENDAR



**NEU NEW 2023**

**N263-23**  
**Above the City**  
 31,5 x 63 cm  
 14 BLÄTTER / SHEETS  
 MONATSKALENDER INTERNATIONAL / MONTHLY INTERNATIONAL CALENDAR



**N261-23**  
**Panoramaphoto**  
 63 x 31,5 cm  
 14 BLÄTTER / SHEETS  
 MONATSKALENDER INTERNATIONAL / MONTHLY INTERNATIONAL CALENDAR

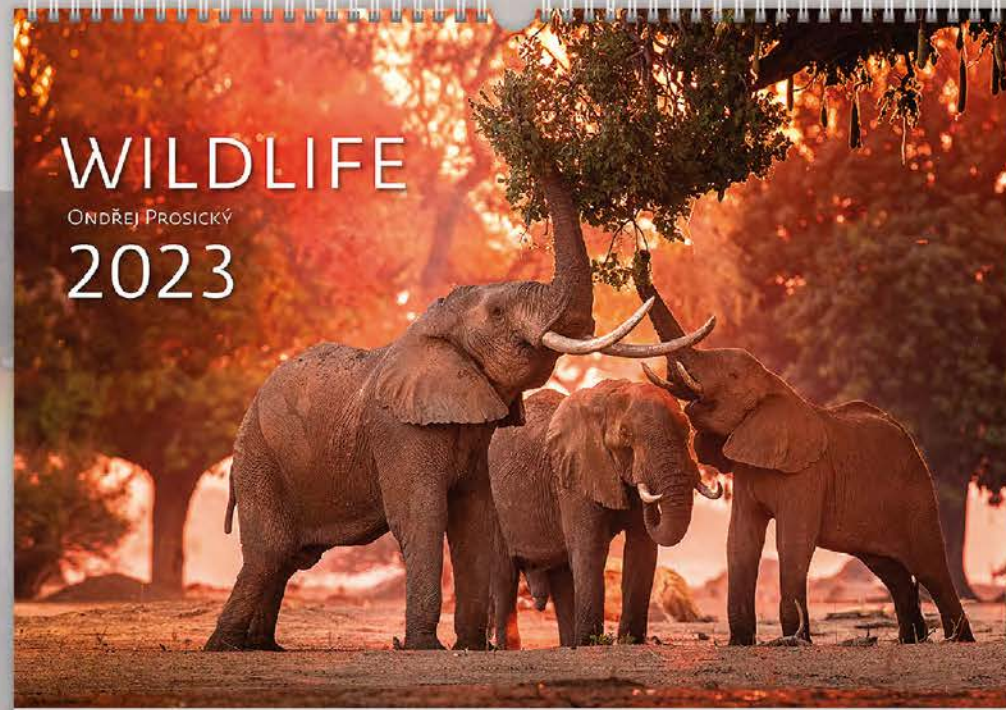






**N264-23**  
**Wildlife** Ondřej Prošický  
 48,5 x 34 cm  
 14 BLÄTTER / SHEETS  
 MONATSKALENDER INTERNATIONAL / MONTHLY INTERNATIONAL CALENDAR

**NEU NEW 2023**



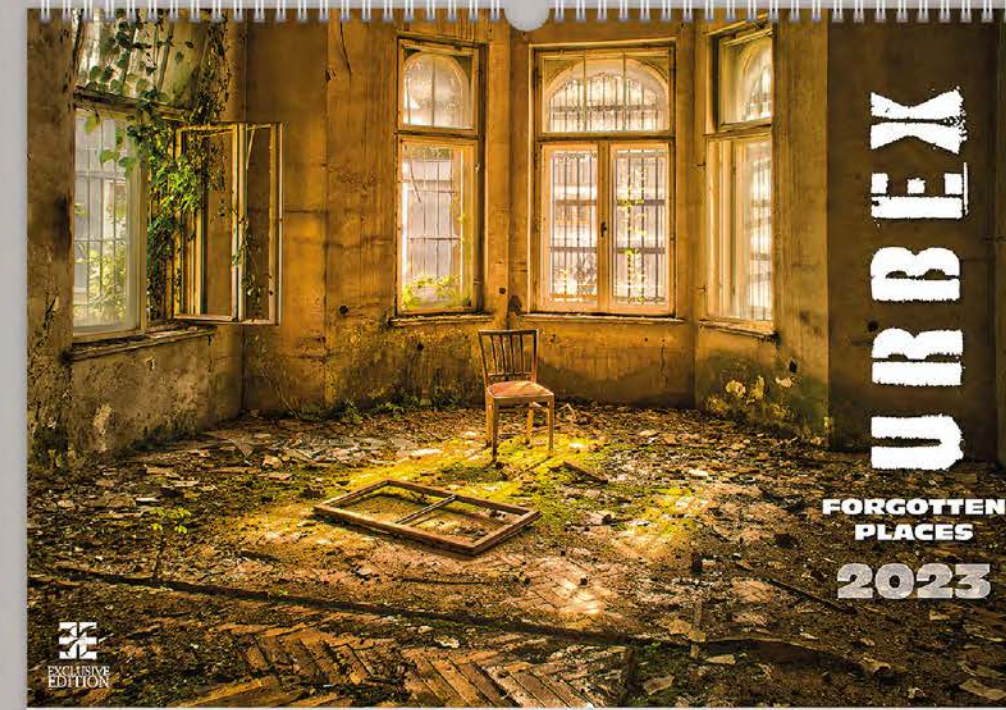
**WILDLIFE**  
 Ondřej Prošický  
**2023**

LOGO: 48,5 x 7 CM



**N267-23**  
**Urbex – Forgotten Places**  
 48,5 x 34 cm  
 14 BLÄTTER / SHEETS  
 MONATSKALENDER INTERNATIONAL / MONTHLY INTERNATIONAL CALENDAR

**NEU NEW 2023**



**URBEX**  
**FORGOTTEN PLACES**  
**2023**

LOGO: 48,5 x 7 CM

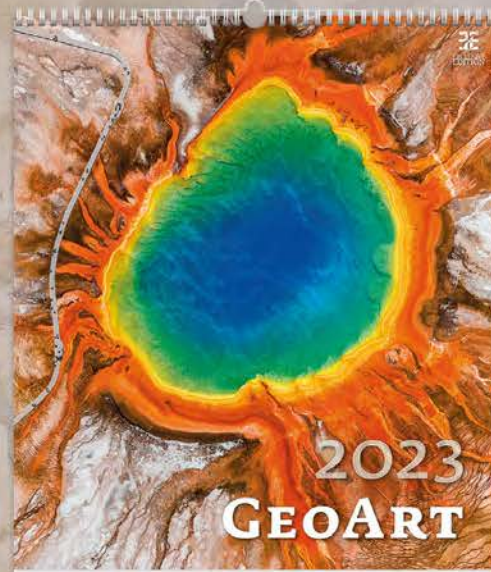




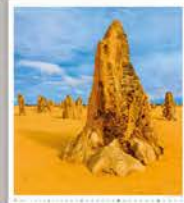
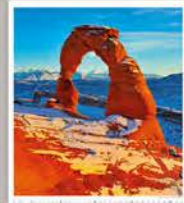
N265-23

Geo Art

45 x 52 CM  
14 BLÄTTER / SHEETS  
MONATSKALENDER INTERNATIONAL / MONTHLY INTERNATIONAL CALENDAR



LOGO: 45 x 7 CM



N271-23

Aqua Dreams ALICE BOCHŇÁKOVÁ

34 x 48,5 CM  
14 BLÄTTER / SHEETS  
MONATSKALENDER INTERNATIONAL / MONTHLY INTERNATIONAL CALENDAR



LOGO: 34 x 7 CM



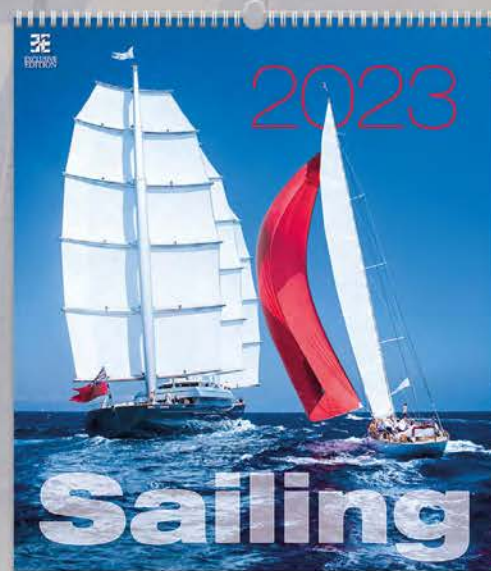
August 2023  
1 2 3 4 5 6 7 8 9 10 11 12 13 14 15 16 17 18 19 20 21 22 23 24 25 26 27 28 29 30 31



N268-23

Sailing

45 x 52 CM  
14 BLÄTTER / SHEETS  
MONATSKALENDER INTERNATIONAL / MONTHLY INTERNATIONAL CALENDAR



LOGO: 45 x 7 CM



10



14



ON017



45 x 52

A4



10



14



ON014



34 x 48,5

A4







**N272-23**  
**Women Exclusive** PETRA ŠEBESTOVÁ

34 x 48,5 cm  
14 BLÄTTER / SHEETS  
MONATSKALENDER INTERNATIONAL / MONTHLY INTERNATIONAL CALENDAR



LOGO: 34 x 7 CM



**N273-23**  
**Girls Exclusive**

34 x 48,5 cm  
14 BLÄTTER / SHEETS  
MONATSKALENDER INTERNATIONAL / MONTHLY INTERNATIONAL CALENDAR



LOGO: 34 x 7 CM



**N274-23**

**Playboy**

34 x 48,5 cm  
14 BLÄTTER / SHEETS  
MONATSKALENDER INTERNATIONAL / MONTHLY INTERNATIONAL CALENDAR



LOGO: 34 x 7 CM





N275-23

Women

45 x 52 cm  
14 BLÄTTER / SHEETS  
MONATSKALENDER INTERNATIONAL / MONTHLY INTERNATIONAL CALENDAR



45 x 52  
A4



LOGO: 45 x 7 CM



N276-23

Men

45 x 52 cm  
14 BLÄTTER / SHEETS  
MONATSKALENDER INTERNATIONAL / MONTHLY INTERNATIONAL CALENDAR



45 x 52  
A4



LOGO: 45 x 7 CM



N277-23

Charm of the Moment DAVID DUBNITSKIY

34 x 48,5 cm  
14 BLÄTTER / SHEETS  
MONATSKALENDER INTERNATIONAL / MONTHLY INTERNATIONAL CALENDAR



34 x 48,5  
A4



LOGO: 34 x 7 CM





📅.365

WANDKALENDER

SIE SCHMÜCKEN, DIENEN UND INSPIRIEREN.  
BLÄTTERN SIE, SUCHEN SIE RUHIG AUS  
UND SEIEN SIE RUHIG ANSPRUCHSVOLL.



📅.365

WALL CALENDARS

DECORATING, SERVING AND INSPIRING.  
LEAF THROUGH, CHOOSE AND DON'T  
BE AFRAID TO BE DEMANDING.







N123-23

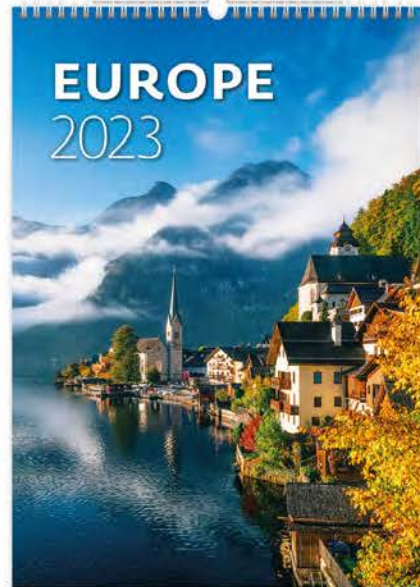
Europe

31,5 x 45 cm

14 BLÄTTER / SHEETS

MONATSKALENDER INTERNATIONAL / MONTHLY INTERNATIONAL CALENDAR

NEU NEW 2023



LOGO: 31,5 x 7 CM



N124-23

Modern Architecture

45 x 31,5 cm

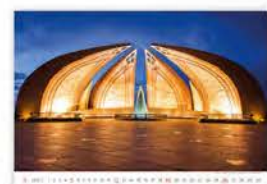
14 BLÄTTER / SHEETS

MONATSKALENDER INTERNATIONAL / MONTHLY INTERNATIONAL CALENDAR

NEU NEW 2023



LOGO: 45 x 7 CM



5-2023 1 2 3 4 5 6 7 8 9 10 11 12 13 14 15 16 17 18 19 20 21 22 23 24 25 26 27 28 29 30 31

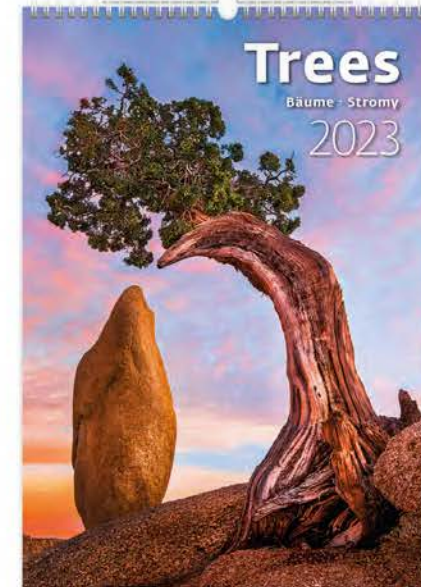
N125-23

Trees

31,5 x 45 cm

14 BLÄTTER / SHEETS

MONATSKALENDER INTERNATIONAL / MONTHLY INTERNATIONAL CALENDAR



LOGO: 31,5 x 7 CM



N126-23

Mountains

31,5 x 45 cm

14 BLÄTTER / SHEETS

MONATSKALENDER INTERNATIONAL / MONTHLY INTERNATIONAL CALENDAR



LOGO: 31,5 x 7 CM



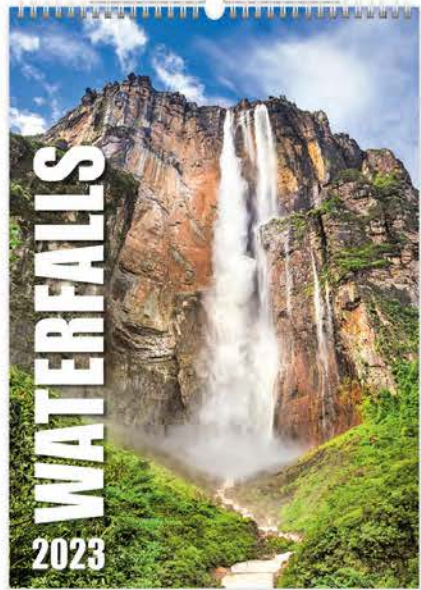




### N127-23

#### Waterfalls

31,5 x 45 cm  
14 BLÄTTER / SHEETS  
MONATSKALENDER INTERNATIONAL / MONTHLY INTERNATIONAL CALENDAR



LOGO: 31,5 x 7 CM



### N128-23

#### Landscapes

45 x 31,5 cm  
14 BLÄTTER / SHEETS  
MONATSKALENDER INTERNATIONAL / MONTHLY INTERNATIONAL CALENDAR



LOGO: 45 x 7 CM



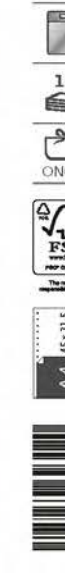
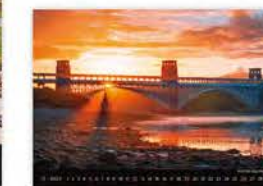
### N129-23

#### Bridges

45 x 31,5 cm  
14 BLÄTTER / SHEETS  
MONATSKALENDER INTERNATIONAL / MONTHLY INTERNATIONAL CALENDAR



LOGO: 45 x 7 CM



### N130-23

#### Gardens

45 x 31,5 cm  
14 BLÄTTER / SHEETS  
MONATSKALENDER INTERNATIONAL / MONTHLY INTERNATIONAL CALENDAR



LOGO: 45 x 7 CM







### N131-23

#### Sea

45 x 31,5 cm  
14 BLÄTTER / SHEETS  
MONATSKALENDER INTERNATIONAL / MONTHLY INTERNATIONAL CALENDAR



LOGO: 45 x 7 CM



### N133-23

#### Via

45 x 31,5 cm  
14 BLÄTTER / SHEETS  
MONATSKALENDER INTERNATIONAL / MONTHLY INTERNATIONAL CALENDAR



LOGO: 45 x 7 CM



### N132-23

#### National Parks

45 x 31,5 cm  
14 BLÄTTER / SHEETS  
MONATSKALENDER INTERNATIONAL / MONTHLY INTERNATIONAL CALENDAR



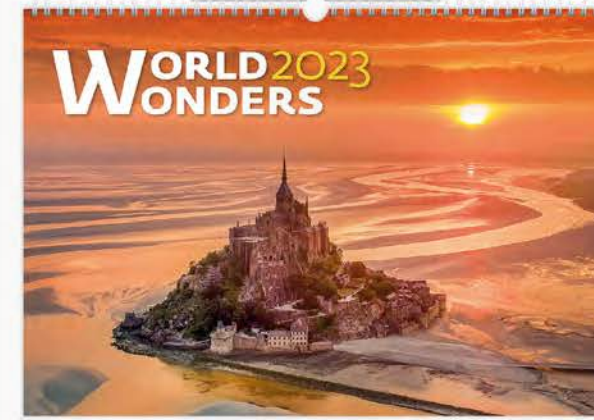
LOGO: 45 x 7 CM



### N134-23

#### World Wonders

45 x 31,5 cm  
14 BLÄTTER / SHEETS  
MONATSKALENDER INTERNATIONAL / MONTHLY INTERNATIONAL CALENDAR



LOGO: 45 x 7 CM





10  
ON014  
FSC  
45 x 31,5  
A4  
8 595230 693976

**N135-23**  
**Golf**  
45 x 31,5 cm  
14 BLÄTTER / SHEETS  
MONATSKALENDER INTERNATIONAL / MONTHLY INTERNATIONAL CALENDAR

NEU  
NEW  
**2023**

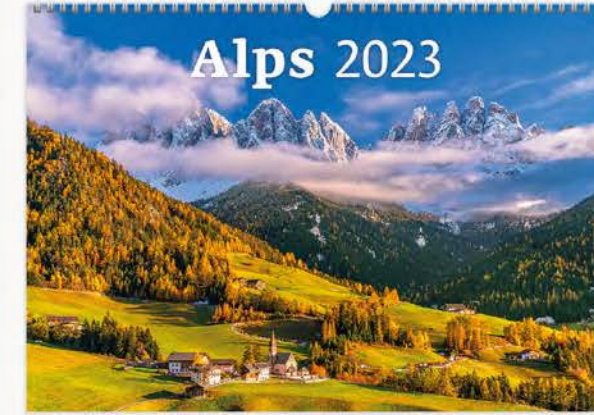


LOGO: 45 x 7 CM



**N138-23**  
**Alps**  
45 x 31,5 cm  
14 BLÄTTER / SHEETS  
MONATSKALENDER INTERNATIONAL / MONTHLY INTERNATIONAL CALENDAR

NEU  
NEW  
**2023**



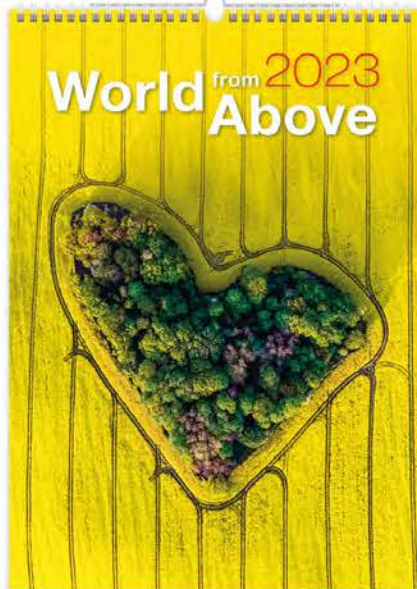
LOGO: 45 x 7 CM



10  
ON014  
FSC  
45 x 31,5  
A4  
8 595230 693990

10  
ON014  
FSC  
31,5 x 45  
A4  
8 595230 694997

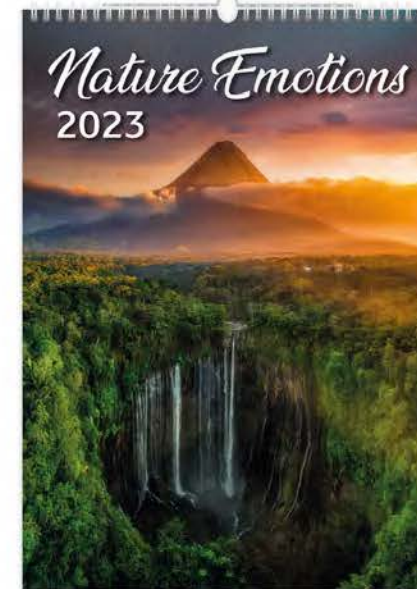
**N137-23**  
**World from Above**  
31,5 x 45 cm  
14 BLÄTTER / SHEETS  
MONATSKALENDER INTERNATIONAL / MONTHLY INTERNATIONAL CALENDAR



LOGO: 31,5 x 7 CM



**N140-23**  
**Nature Emotions**  
31,5 x 45 cm  
14 BLÄTTER / SHEETS  
MONATSKALENDER INTERNATIONAL / MONTHLY INTERNATIONAL CALENDAR



LOGO: 31,5 x 7 CM



10  
ON014  
FSC  
31,5 x 45  
A4  
8 595230 694836

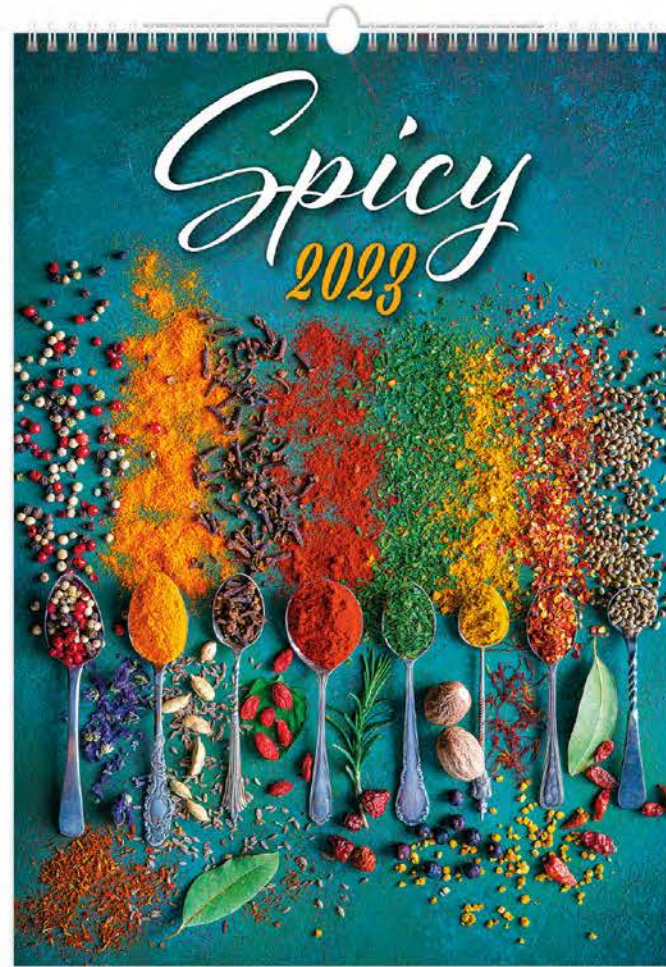


10  
ON014  
FSC  
31,5 x 45  
A4  
8 595230 693532

**N139-23**

**Spicy**

31,5 x 45 cm  
14 BLÄTTER / SHEETS  
MONATSKALENDER INTERNATIONAL / MONTHLY INTERNATIONAL CALENDAR



LOGO: 31,5 x 7 CM



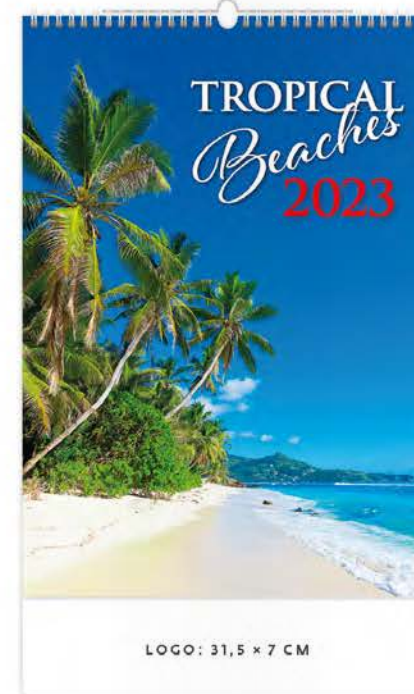
NEU  
NEW 2023



**N141-23**

**Tropical Beaches**

31,5 x 45 cm  
14 BLÄTTER / SHEETS  
MONATSKALENDER INTERNATIONAL / MONTHLY INTERNATIONAL CALENDAR



LOGO: 31,5 x 7 CM

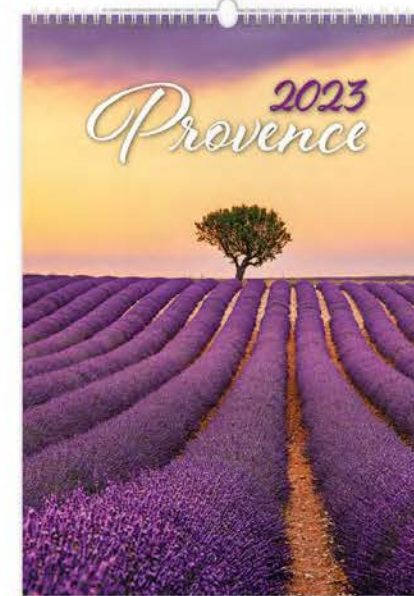


10  
ON014  
FSC  
31,5 x 45  
A4  
8 595230 694003

**N142-23**

**Provence**

31,5 x 45 cm  
14 BLÄTTER / SHEETS  
MONATSKALENDER INTERNATIONAL / MONTHLY INTERNATIONAL CALENDAR

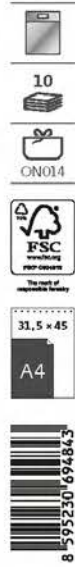


LOGO: 31,5 x 7 CM



10  
ON014  
FSC  
31,5 x 45  
A4  
8 595230 693075





**N143-23**  
**Sweet Home**

31,5 x 45 cm  
14 BLÄTTER / SHEETS  
MONATSKALENDER INTERNATIONAL / MONTHLY INTERNATIONAL CALENDAR



LOGO: 31,5 x 7 CM



**N144-23**  
**Herbarium**

31,5 x 45 cm  
14 BLÄTTER / SHEETS  
MONATSKALENDER INTERNATIONAL / MONTHLY INTERNATIONAL CALENDAR



LOGO: 31,5 x 7 CM

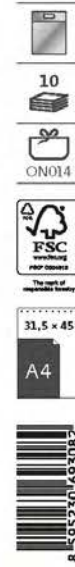


**N145-23**

**Magic Flowers** ALENA HRBKOVÁ  
31,5 x 45 cm  
14 BLÄTTER / SHEETS  
MONATSKALENDER INTERNATIONAL / MONTHLY INTERNATIONAL CALENDAR



LOGO: 31,5 x 7 CM



**N147-23**

**Romantic Corners**  
31,5 x 45 cm  
14 BLÄTTER / SHEETS  
MONATSKALENDER INTERNATIONAL / MONTHLY INTERNATIONAL CALENDAR



LOGO: 31,5 x 7 CM







**N146-23**  
**Black Red**

45 x 31,5 cm  
14 BLÄTTER / SHEETS  
MONATSKALENDER INTERNATIONAL / MONTHLY INTERNATIONAL CALENDAR

**NEU NEW 2023**



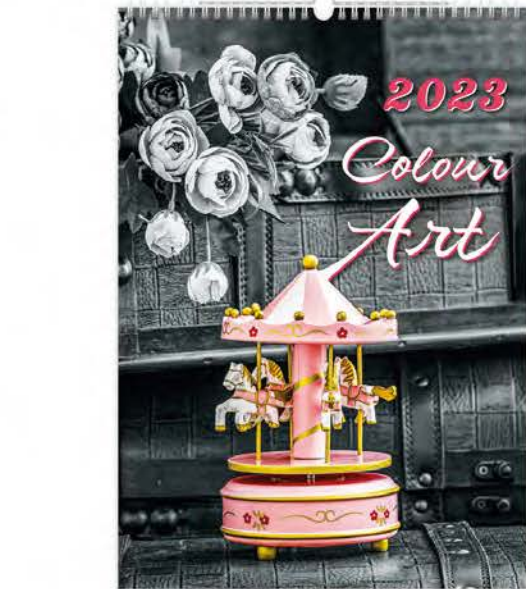
2023

LOGO: 45 x 7 CM



**N148-23**  
**Colour Art**

31,5 x 45 cm  
14 BLÄTTER / SHEETS  
MONATSKALENDER INTERNATIONAL / MONTHLY INTERNATIONAL CALENDAR



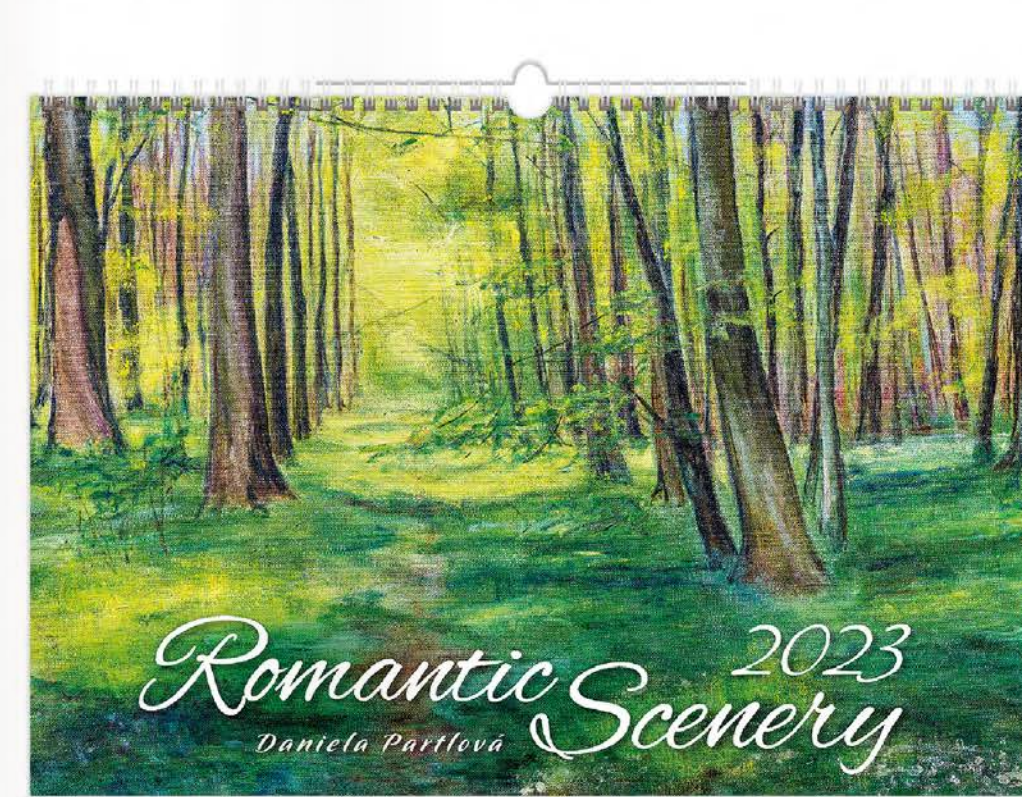
LOGO: 31,5 x 7 CM



**N149-23**  
**Romantic Scenery** DANIELA PARTLOVÁ

45 x 31,5 cm  
14 BLÄTTER / SHEETS  
MONATSKALENDER INTERNATIONAL / MONTHLY INTERNATIONAL CALENDAR

**NEU NEW 2023**



*Romantic Scenery* 2023  
Daniela Partlová

LOGO: 45 x 7 CM



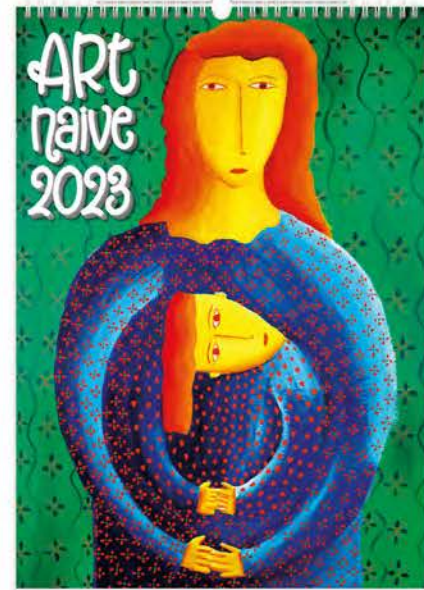


10  
ON014  
FSC  
31,5 x 45  
A4  
8 595230 693518

**N150-23**  
**Art Naive**

31,5 x 45 cm  
14 BLÄTTER / SHEETS  
MONATSKALENDER INTERNATIONAL / MONTHLY INTERNATIONAL CALENDAR

**NEU NEW 2023**



LOGO: 31,5 x 7 CM



10  
ON014  
FSC  
45 x 31,5  
A4  
8 595230 694874

**N152-23**  
**Horses**

45 x 31,5 cm  
14 BLÄTTER / SHEETS  
MONATSKALENDER INTERNATIONAL / MONTHLY INTERNATIONAL CALENDAR

**NEU NEW 2023**



LOGO: 45 x 7 CM



3-2023 1 2 3 4 5 6 7 8 9 10 11 12 13 14 15 16 17 18 19 20 21 22 23 24 25 26 27 28 29 30 31

**N157-23**  
**Trains**

45 x 31,5 cm  
14 BLÄTTER / SHEETS  
MONATSKALENDER INTERNATIONAL / MONTHLY INTERNATIONAL CALENDAR

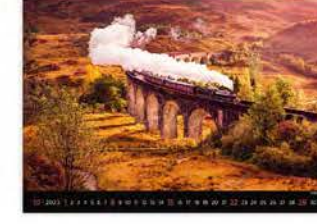
**NEU NEW 2023**



LOGO: 45 x 7 CM



5-2023 1 2 3 4 5 6 7 8 9 10 11 12 13 14 15 16 17 18 19 20 21 22 23 24 25 26 27 28 29 30 31



10  
ON014  
FSC  
45 x 31,5  
A4  
8 595230 693525





### N153-23

#### Cars

45 x 31,5 cm  
14 BLÄTTER / SHEETS  
MONATSKALENDER INTERNATIONAL / MONTHLY INTERNATIONAL CALENDAR



LOGO: 45 x 7 CM



### N154-23

#### Good Old Bikes

45 x 31,5 cm  
14 BLÄTTER / SHEETS  
MONATSKALENDER INTERNATIONAL / MONTHLY INTERNATIONAL CALENDAR

## NEU NEW 2023



LOGO: 45 x 7 CM



### N155-23

#### Trucks

45 x 31,5 cm  
14 BLÄTTER / SHEETS  
MONATSKALENDER INTERNATIONAL / MONTHLY INTERNATIONAL CALENDAR



LOGO: 45 x 7 CM



### N158-23

#### Retro Cars

45 x 31,5 cm  
14 BLÄTTER / SHEETS  
MONATSKALENDER INTERNATIONAL / MONTHLY INTERNATIONAL CALENDAR



LOGO: 45 x 7 CM







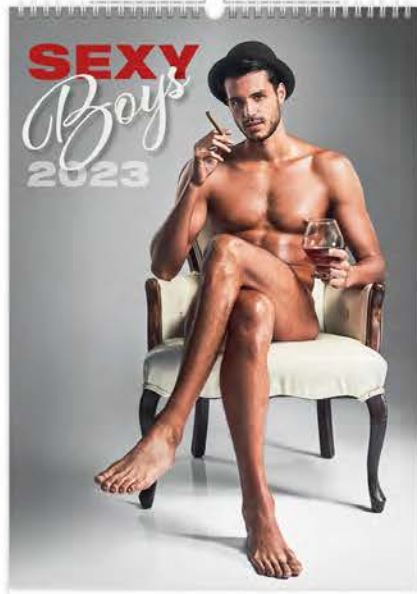
### N160-23

#### Sexy Boys

31,5 x 45 cm

14 BLÄTTER / SHEETS

MONATSKALENDER INTERNATIONAL / MONTHLY INTERNATIONAL CALENDAR



LOGO: 31,5 x 7 CM



### N163-23

#### Flirt

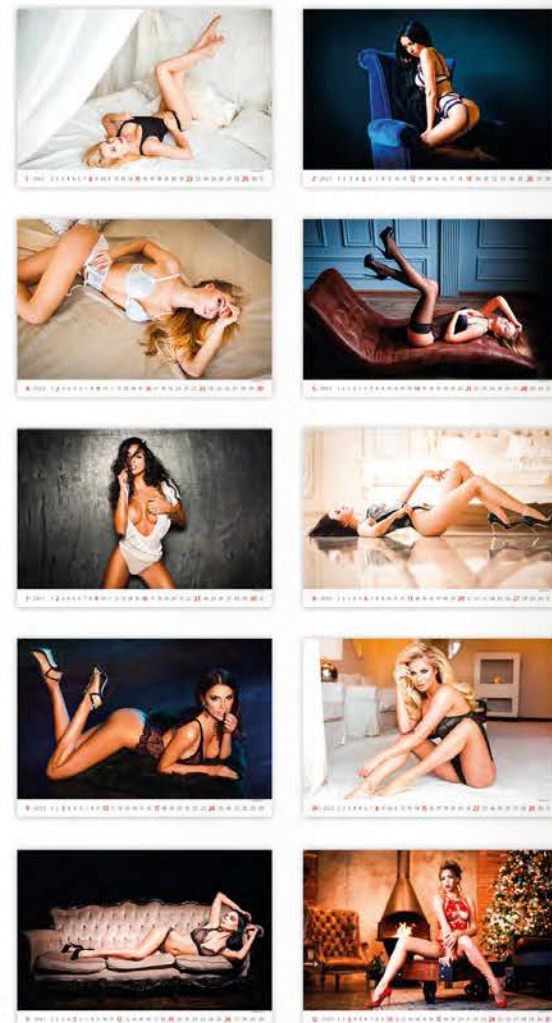
45 x 31,5 cm

14 BLÄTTER / SHEETS

MONATSKALENDER INTERNATIONAL / MONTHLY INTERNATIONAL CALENDAR



LOGO: 45 x 7 CM



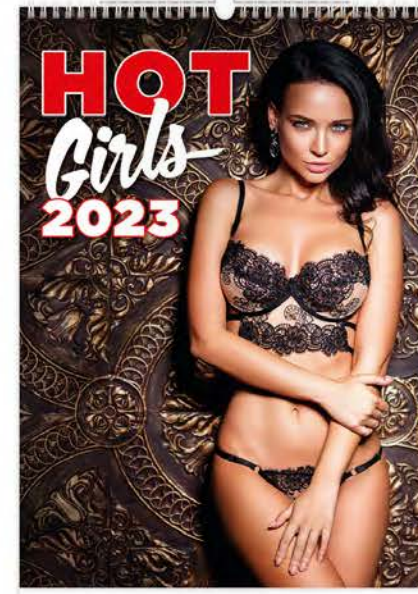
### N161-23

#### Hot Girls

31,5 x 45 cm

14 BLÄTTER / SHEETS

MONATSKALENDER INTERNATIONAL / MONTHLY INTERNATIONAL CALENDAR



LOGO: 31,5 x 7 CM



### N162-23

#### Top Girls

31,5 x 45 cm

14 BLÄTTER / SHEETS

MONATSKALENDER INTERNATIONAL / MONTHLY INTERNATIONAL CALENDAR



LOGO: 31,5 x 7 CM



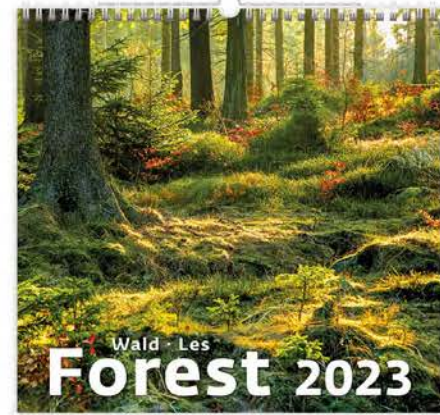




### N165-23

#### Forest

34 x 32,5 cm  
14 BLÄTTER / SHEETS  
MONATSKALENDER INTERNATIONAL  
MONTHLY INTERNATIONAL CALENDAR



LOGO: 34 x 7 CM



8 595230 693907



### N166-23

#### Aqua

34 x 32,5 cm  
14 BLÄTTER / SHEETS  
MONATSKALENDER INTERNATIONAL  
MONTHLY INTERNATIONAL CALENDAR



LOGO: 34 x 7 CM



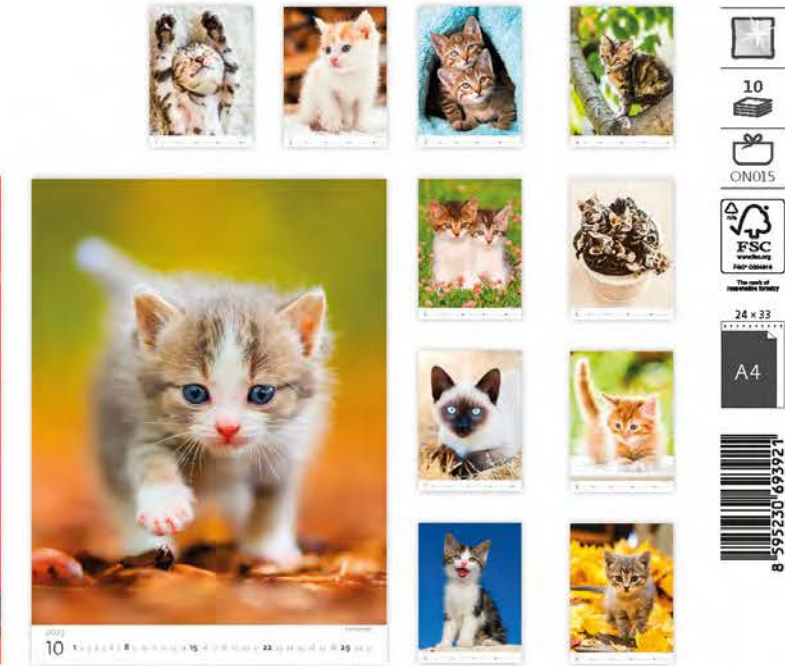
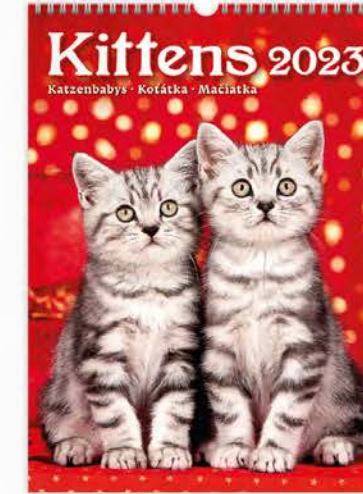
8 595230 693974



### N170-23

#### Kittens

24 x 33 cm  
14 BLÄTTER / SHEETS  
MONATSKALENDER INTERNATIONAL  
MONTHLY INTERNATIONAL CALENDAR

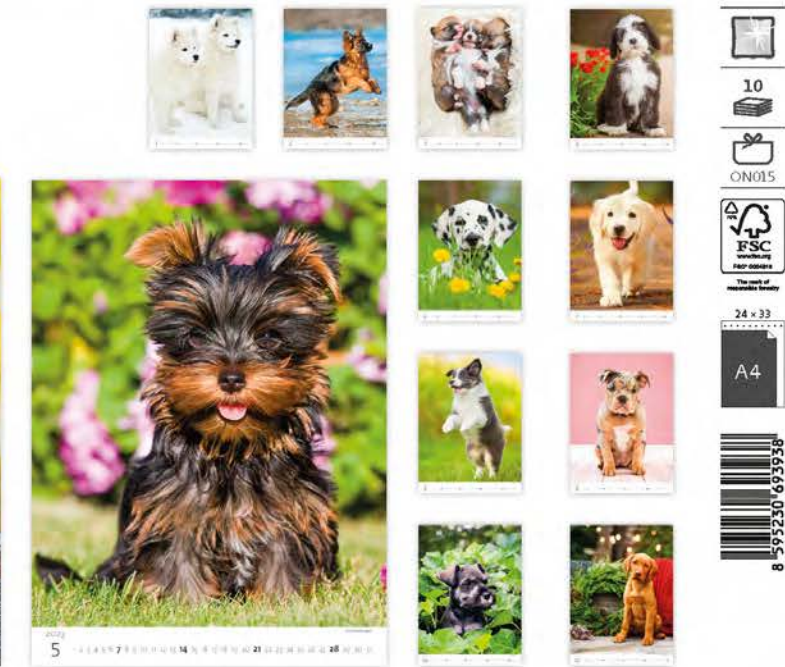
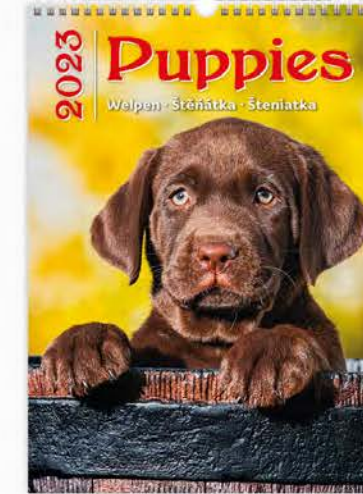


8 595230 693921

### N171-23

#### Puppies

24 x 33 cm  
14 BLÄTTER / SHEETS  
MONATSKALENDER INTERNATIONAL  
MONTHLY INTERNATIONAL CALENDAR

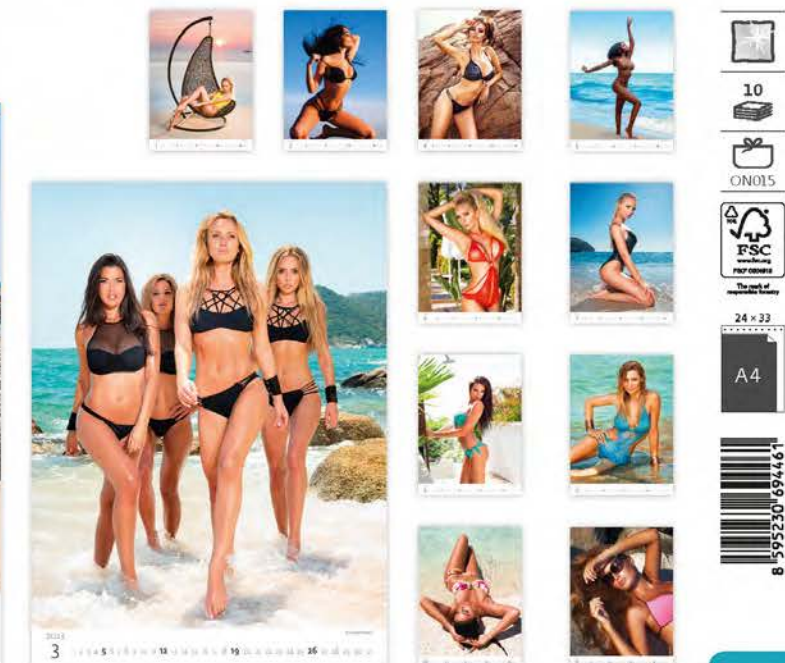


8 595230 693938

### N172-23

#### Beach Girls

24 x 33 cm  
14 BLÄTTER / SHEETS  
MONATSKALENDER INTERNATIONAL  
MONTHLY INTERNATIONAL CALENDAR



8 595230 694401





**SM20-23**  
**Mini Kittens**  
 9,6 x 10,5 cm  
 13 BLÄTTER / SHEETS  
 MONATSKALENDER INTERNATIONAL / MONTHLY INTERNATIONAL CALENDAR



## Kartons / Boxes

Die Kartonverpackung wird aus Wellpappe hergestellt und kann für die Kalender mit verlängerter Rückwand und Spiralbindung verwendet werden. Wir liefern die Verpackungen ungefaltet (einfache Montage). Die Verpackungen sind zu jeweils 10 Stück in Papier eingepackt. Für jedes Kalenderformat haben wir entsprechende Kartons.

Cardboard packaging is made of micro-corrugated cardboard and can be utilised for calendars with spirals and with an oversized cardboard back. We supply them unassembled upon order (easy assembly). They are supplied in packages of 10 pieces wrapped in paper. We have tailor-made packaging for each calendar.



**ON-014**  
 FORMAT / SIZE: 57 x 43 cm  
 PASSEND FÜR KALENDER /  
 SUITABLE FOR CALENDARS:  
 31,5 x 45 cm  
 45 x 31,5 cm  
 34 x 48,5 cm  
 48,5 x 34 cm



**ON-015**  
 FORMAT / SIZE: 41,5 x 35,5 cm  
 PASSEND FÜR KALENDER /  
 SUITABLE FOR CALENDARS:  
 24 x 30 cm  
 24 x 33 cm  
 34 x 31,5 cm



**SM21-23**  
**Mini Puppies**  
 9,6 x 10,5 cm  
 13 BLÄTTER / SHEETS  
 MONATSKALENDER INTERNATIONAL / MONTHLY INTERNATIONAL CALENDAR



**ON-016**  
 FORMAT / SIZE: 71,5 x 49 cm  
 PASSEND FÜR KALENDER /  
 SUITABLE FOR CALENDARS:  
 63 x 31,5 cm  
 31,5 x 63 cm



**ON-017**  
 FORMAT / SIZE: 60,3 x 46,3 cm  
 PASSEND FÜR KALENDER /  
 SUITABLE FOR CALENDARS:  
 45 x 52 cm



**📅.365**

LP WANDKALENDER  
MIT FOTOGRAFIEN, DIE SIE MITREIßEN  
UND MIT GENAU AUSREICHENDEM PLATZ  
FÜR IHRE NOTIZEN.

**📅.365**

LP WALL CALENDARS  
PHOTOGRAPHS YOU CANNOT RESIST  
AND AS MUCH SPACE FOR YOUR NOTES  
AS YOU MAY NEED.





### LP01-23

#### Cats

30 x 60 (30 x 30) cm  
14 BLÄTTER / SHEETS

MONATSKALENDER INTERNATIONAL MIT FEIERTAGEN IN 40 LÄNDERN DER WELT /  
MONTHLY INTERNATIONAL CALENDAR WITH HOLIDAYS OF 40 WORLD COUNTRIES



### LP03-23

#### Horses

30 x 60 (30 x 30) cm  
14 BLÄTTER / SHEETS

MONATSKALENDER INTERNATIONAL MIT FEIERTAGEN IN 40 LÄNDERN DER WELT /  
MONTHLY INTERNATIONAL CALENDAR WITH HOLIDAYS OF 40 WORLD COUNTRIES



### LP02-23

#### Dogs

30 x 60 (30 x 30) cm  
14 BLÄTTER / SHEETS

MONATSKALENDER INTERNATIONAL MIT FEIERTAGEN IN 40 LÄNDERN DER WELT /  
MONTHLY INTERNATIONAL CALENDAR WITH HOLIDAYS OF 40 WORLD COUNTRIES



### LP04-23

#### Animal Friends

30 x 60 (30 x 30) cm  
14 BLÄTTER / SHEETS

MONATSKALENDER INTERNATIONAL MIT FEIERTAGEN IN 40 LÄNDERN DER WELT /  
MONTHLY INTERNATIONAL CALENDAR WITH HOLIDAYS OF 40 WORLD COUNTRIES







LP05-23

Little Fun

30 x 60 (30 x 30) cm

14 BLÄTTER / SHEETS

MONATSKALENDER INTERNATIONAL MIT FEIERTAGEN IN 40 LÄNDERN DER WELT / MONTHLY INTERNATIONAL CALENDAR WITH HOLIDAYS OF 40 WORLD COUNTRIES



LP07-23

Hearts

30 x 60 (30 x 30) cm

14 BLÄTTER / SHEETS

MONATSKALENDER INTERNATIONAL MIT FEIERTAGEN IN 40 LÄNDERN DER WELT / MONTHLY INTERNATIONAL CALENDAR WITH HOLIDAYS OF 40 WORLD COUNTRIES



LP06-23

National Parks

30 x 60 (30 x 30) cm

14 BLÄTTER / SHEETS

MONATSKALENDER INTERNATIONAL MIT FEIERTAGEN IN 40 LÄNDERN DER WELT / MONTHLY INTERNATIONAL CALENDAR WITH HOLIDAYS OF 40 WORLD COUNTRIES



LP08-23

Provence

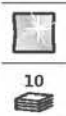
30 x 60 (30 x 30) cm

14 BLÄTTER / SHEETS

MONATSKALENDER INTERNATIONAL MIT FEIERTAGEN IN 40 LÄNDERN DER WELT / MONTHLY INTERNATIONAL CALENDAR WITH HOLIDAYS OF 40 WORLD COUNTRIES







LP09-23

**Hygge**

30 x 60 (30 x 30) cm  
14 BLÄTTER / SHEETS

MONATSKALENDER INTERNATIONAL MIT FEIERTAGEN IN 40 LÄNDERN DER WELT /  
MONTHLY INTERNATIONAL CALENDAR WITH HOLIDAYS OF 40 WORLD COUNTRIES



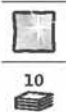
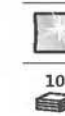
LP200-23

**Family Planner**

30 x 60 (30 x 30) cm  
14 BLÄTTER / SHEETS

MONATSKALENDER INTERNATIONAL MIT FEIERTAGEN IN 40 LÄNDERN DER WELT /  
MONTHLY INTERNATIONAL CALENDAR WITH HOLIDAYS OF 40 WORLD COUNTRIES

NEU NEW 2023

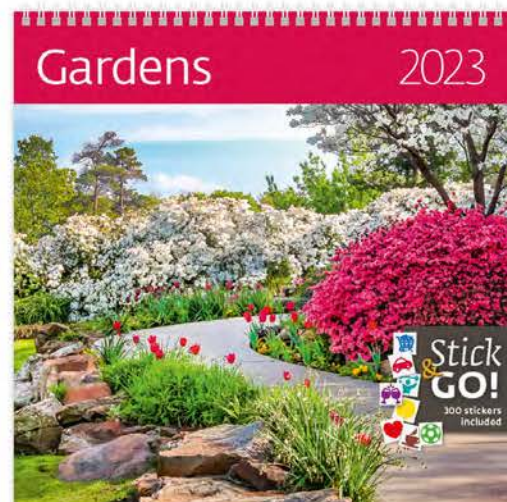


LP10-23

**Gardens**

30 x 60 (30 x 30) cm  
14 BLÄTTER / SHEETS

MONATSKALENDER INTERNATIONAL MIT FEIERTAGEN IN 40 LÄNDERN DER WELT /  
MONTHLY INTERNATIONAL CALENDAR WITH HOLIDAYS OF 40 WORLD COUNTRIES



**Stick & GO!**  
300 stickers included







**Ü.365**

NOTIZBÜCHER

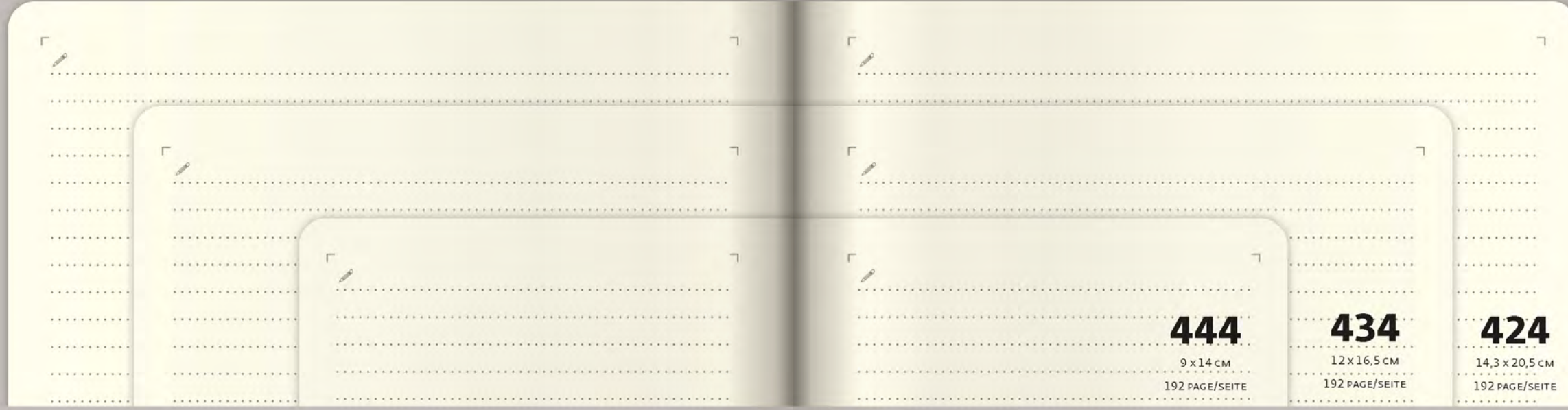
IDEEN, PLÄNE, TIPPS, WICHTIGE VERWEISE,  
ODER NOCH MEHR? ALLES PASST  
IN UNSERE NEUE NOTIZBÜCHER.

NOTEBOOKS

IDEAS, PLANS, TIPS, IMPORTANT LINKS  
OR EVEN MORE? ALL OF THIS WILL  
FIT INTO OUR NEW NOTEBOOKS.

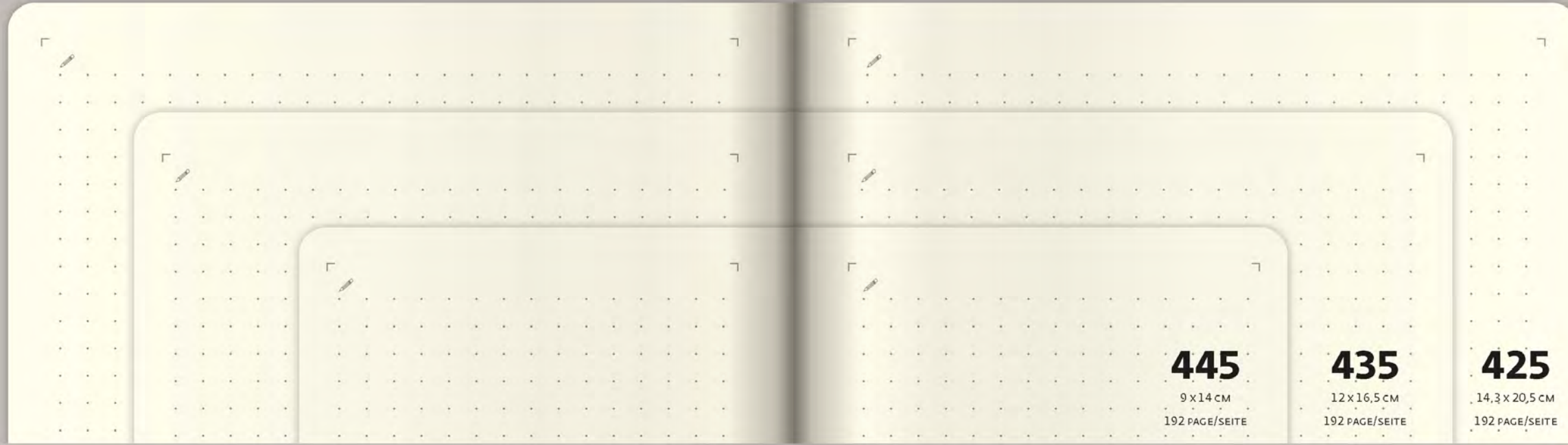


LINIERT • LINED



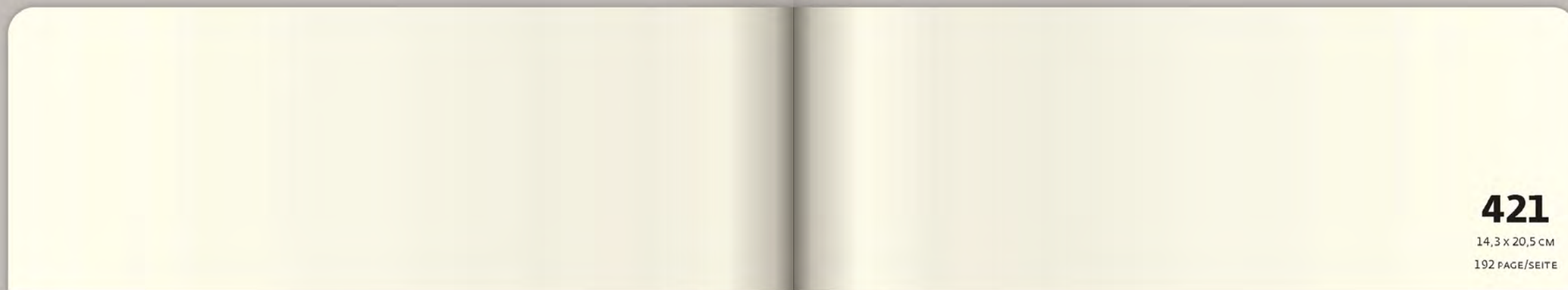
LINIERT • LINED

PUNKTRASTER • DOT GRID



PUNKTRASTER • DOT GRID

BLANKO • BLANK

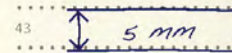


BLANKO • BLANK



# INDEX

1	
2	
3	financial results 1/2
4	financial results 2/2
5	
6	
7	consultation Zurich
8	
9	
10	manufacturing solutions
11	
12	
13	
14	consultation Luzern
15	backup project 1/1
16	backup project 1/2
17	backup project 1/3
18	cooperation London
19	
20	
21	
22	
23	
24	
25	
26	
27	holiday planning
28	holiday planning
29	holiday planning
30	
31	
32	
33	
34	
35	
36	
37	
38	tips for Christmas presents
39	TOP SECRET
40	
41	
42	



homework

homework

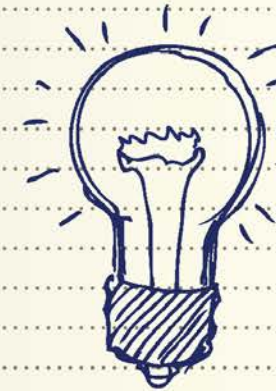
tips for Christmas presents  
TOP SECRET

# Gebrauchsanleitung/Instructions for use



## Liniert Lined

- Feine Linien aus Punkten ermöglichen auch Zeichnen. Sie stören Sie einfach nicht.
- Thin lines are composed of small dots, allowing various use of the page for drawings or sketches. The lines do not disturb you at all.



## Punktraster Dot Grid

- Einfaches Erstellen von Linien (vertikal, horizontal oder diagonal), Grafen, Bilder usw.
- Fast and convenient creation of lines (vertical, horizontal or diagonal), graphs, sketches, drawings and so on.



- Dank den nummerierten Seiten und dem Index halten Sie den Überblick über Ihre Notizen.
- You keep clear overview about all your notes thanks to paginated sheets and index page.

Einfaches Fotografieren einer Seite (Scannen) für weitere Ausnutzung in intelligenten Geräten.  
You can easily take a photo (scan) of each page for further use in your smart devices.





# FLIP

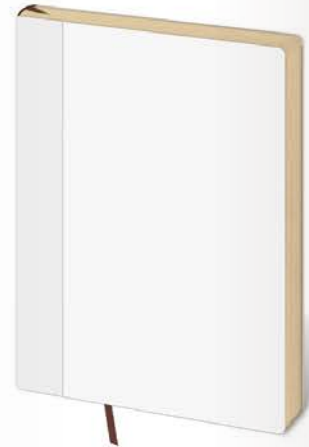
Wir präsentieren einen modernen Notizbuchtyp mit austauschbaren Einbänden und variablem Inhalt. Die praktischen Einbände sind mit einer Schlaufe für einen Stift, einer magnetischen Verschlussklappe und einer dekorativen Einfassungsnaht ausgestattet. Die Einbände können wiederholt für Notizbücher und Terminkalender verwendet werden. Das hochwertige Kunstleder ermöglicht ausgezeichnete Ergebnisse bei der Blindprägung ohne Folie.

We are introducing a modern type of notepad with interchangeable covers and variable content. The practical covers have a clasp for a ball-point pen, magnetic closing clip, and their edges are decorated with embroidered stitching. The covers can be used repeatedly for notepads and diaries. The high quality leatherette ensures excellent blind embossing results without foil.

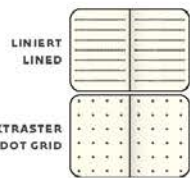


*! Refill*

CODE	VERSION	EAN
BNA434	LINIERT/LINED 12 x 16,5 CM	8 595230 651402
BNA435	PUNKTRASTER/DOT GRID 12 x 16,5 CM	8 595230 651419
BNA424	LINIERT/LINED 14,3 x 20,5 CM	8 595230 651426
BNA425	PUNKTRASTER/DOT GRID 14,3 x 20,5 CM	8 595230 651433



**M**  
12 x 16,5  
CM

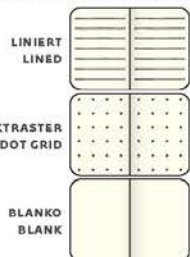


CODE	EAN
BFL434-1	8 595230 646371
BFL435-1	8 595230 646385

CODE	EAN
BFL434-2	8 595230 646378
BFL435-2	8 595230 646842

CODE	EAN
BFL434-3	8 595230 646385
BFL435-3	8 595230 646859

**L**  
14,3 x 20,5  
CM



CODE	EAN
BFL424-1	8 595230 646545
BFL425-1	8 595230 647016

CODE	EAN
BFL424-2	8 595230 646552
BFL425-2	8 595230 647023
BFL421-2	8 595230 647498

CODE	EAN
BFL424-3	8 595230 646569
BFL425-3	8 595230 647030
BFL421-3	8 595230 647504

## NEU NEW 2023 | NEUE FARBEN IM SOMMER NEW COLORS IN SUMMER



CODE	EAN
BFL434-4	8 595230 646392
BFL435-4	8 595230 646866

CODE	EAN
BFL434-5	8 595230 646408
BFL435-5	8 595230 646873

CODE	EAN
BFL434-6	8 595230 646415
BFL435-6	8 595230 646880

CODE	EAN
BFL434-7	8 595230 646422
BFL435-7	8 595230 646897

CODE	EAN
BFL424-4	8 595230 646576
BFL425-4	8 595230 647047

CODE	EAN
BFL424-5	8 595230 646583
BFL425-5	8 595230 647054

CODE	EAN
BFL424-6	8 595230 646590
BFL425-6	8 595230 647061
BFL421-6	8 595230 647535

CODE	EAN
BFL424-7	8 595230 646606
BFL425-7	8 595230 647078
BFL421-7	8 595230 647542





# FLEXIES

flexies.

DAS MATTE KUNSTLEDER VIVELLA IST EIN HOCHWERTIGES, IM GRIFF ÄUSSERST ANGENEHMES UND ZUGLEICH SEHR BELIEBTES MATERIAL, DAS PERFERTE ERGEBNISSE BEI DER BLINDPRÄGUNG OHNE FOLIE ERMÖGLICHT. DA DAS KUNSTLEDER DIREKT AUF DIE PAPPE KASCHIERT IST, SIND DIE EINBÄNDE DES NOTIZBUCHS UNGEWÖHNLICH DÜNN, WODURCH DAS PRODUKT LEICHT UND BIEGSAM IST. DAS NOTIZBUCH IST ZUDEM MIT EINEM PRAKTISCHEN GUMMIBAND ZUM VERSCHLIESSEN UND EINER SCHLAUFE FÜR EINEN STIFT AUSGESTATTET.

THE VIVELLA MATTE LEATHERETTE IS A HIGHLY POPULAR HIGH-QUALITY MATERIAL THAT IS PLEASANT TO TOUCH, WHICH ENSURES PERFECT RESULTS WHEN BLIND EMBOSSED WITHOUT FOIL. AS THE LEATHERETTE IS DIRECTLY LAMINATED ONTO CARDBOARD, THE COVERS ARE UNUSUALLY THIN, THANKS TO WHICH THE NOTEPAD IS LIGHT AND FLEXIBLE. THE NOTEPAD HAS A PRACTICAL RUBBER CLOSURE AND A STRAP FOR A BALL-POINT PEN.



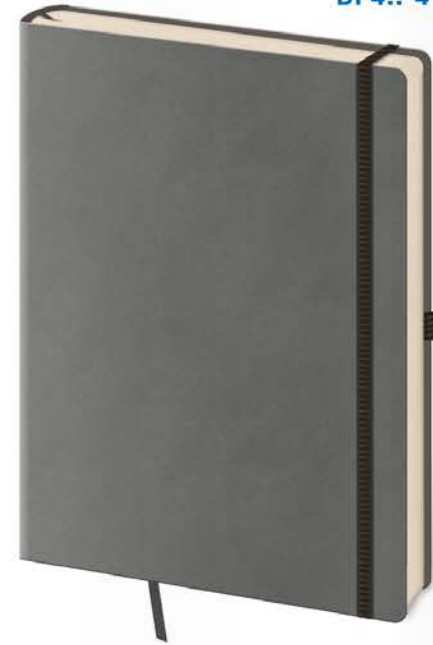
INNENTASCHE · PAPER POCKET

flexies.

BF4..-2



BF4..-4



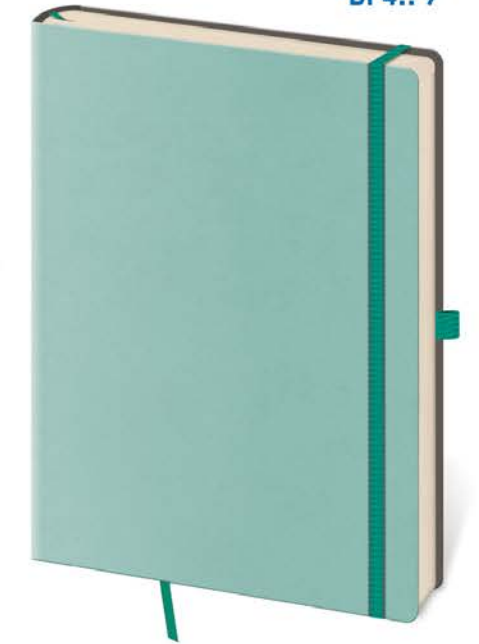
BF4..-10



BF4..-6



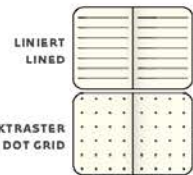
BF4..-7



INNENTASCHE · PAPER POCKET

M

12 x 16,5  
CM



CODE	EAN
BF434-2	8 595230 646293

CODE	EAN
BF434-4	8 595230 646286

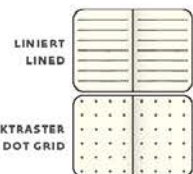
CODE	EAN
BF434-10	8 595230 650801
BF435-10	8 595230 650832

CODE	EAN
BF434-6	8 595230 665294

CODE	EAN
BF434-7	8 595230 665300

L

14,3 x 20,5  
CM



CODE	EAN
BF424-2	8 595230 646477
BF425-2	8 595230 647122

CODE	EAN
BF424-4	8 595230 646460

CODE	EAN
BF424-10	8 595230 650818
BF425-10	8 595230 650849

CODE	EAN
BF424-6	8 595230 665317

CODE	EAN
BF424-7	8 595230 665324

5

A4

434  
435

12 x 16,5

5

A4

424  
425

14,3 x 20,5



# BLACK RED · DOUBLE BLUE · BLACK GREEN

DIE EINBÄNDE SIND AUS MATTEM MATERIAL AUF BASIS STRUKTURLOSEN, VEREDELTEN PAPIERS UND BEEINTRÄCHTIGEN DADURCH DAS DESIGN DES PRODUKTS IN KEINER WEISE. DAS NOTIZBUCH IST ZUDEM MIT EINEM PRAKTISCHEN GUMMIBAND ZUM VERSCHLIESSEN UND EINER SCHLAUPE FÜR EINEN STIFT AUSGESTATTET. ABGERUNDET WIRD DAS DESIGN DURCH DIE DEKORATIVE EINFASSUNGSNAHT. DIE EINBÄNDE LASSEN SICH ÜBER FOLIE PRÄGEN ODER PER SIEBDRUCK BEDRUCKEN.

THE COVERS ARE MADE OF A MATTE PAPER-BASED MATERIAL THAT IS FREE OF STRUCTURE AND HENCE DOES NOT DISRUPT THE APPEARANCE OF THE PRODUCT ITSELF. THE NOTEPAD IS COMPLETE WITH A PRACTICAL CLOSURE AND A STRAP FOR A BALL-POINT PEN, AND THE ENTIRE DESIGN IS COMPLEMENTED WITH EMBROIDERED STITCHING. IT IS POSSIBLE TO EMBOSS THE COVERS WITH FOIL, OR DIRECTLY WITH SILK-SCREEN PRINTING.



INNENTASCHE · PAPER POCKET

Size	Grid Type	CODE	EAN	CODE	EAN	CODE	EAN	CODE	EAN
S 9 x 14 CM	LINIERT LINED	BB444-1	8 595230 646149	BB444-2	8 595230 646736	BB444-3	8 595230 646163	BB445-3	8 595230 646743
	PUNKTRASTER DOT GRID	BB445-1	8 595230 646729						
M 12 x 16,5 CM	LINIERT LINED	BB434-1	8 595230 646255	BB434-2	8 595230 646262	BB434-3	8 595230 646279	BB435-3	8 595230 646927
	PUNKTRASTER DOT GRID	BB435-1	8 595230 646903	BB435-2	8 595230 646910				
L 14,3 x 20,5 CM	LINIERT LINED	BB424-1	8 595230 646439	BB424-2	8 595230 646446	BB424-3	8 595230 646453		
	PUNKTRASTER DOT GRID	BB425-1	8 595230 647083						

# BLACK WHITE · BLACK ORANGE DOUBLE VIOLET · DOUBLE BLACK



CODE	EAN	CODE	EAN	CODE	EAN	CODE	EAN
BB434-4	8 595230 665263	BB434-5	8 595230 665256	BB434-6	8 595230 665287	BB434-7	8 595230 665270
BB424-4	8 595230 665225	BB424-5	8 595230 665218	BB424-6	8 595230 665249	BB424-7	8 595230 665232





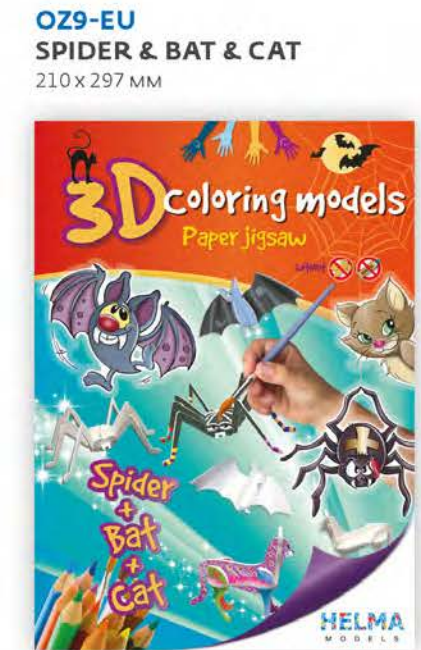
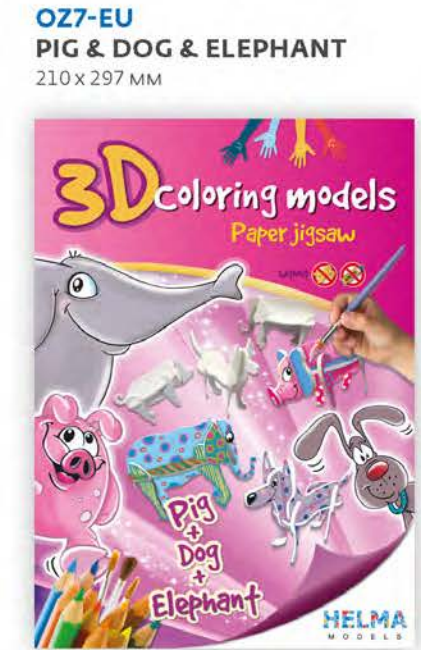
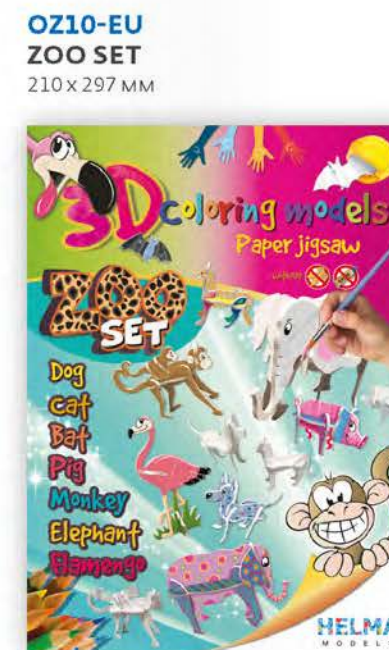
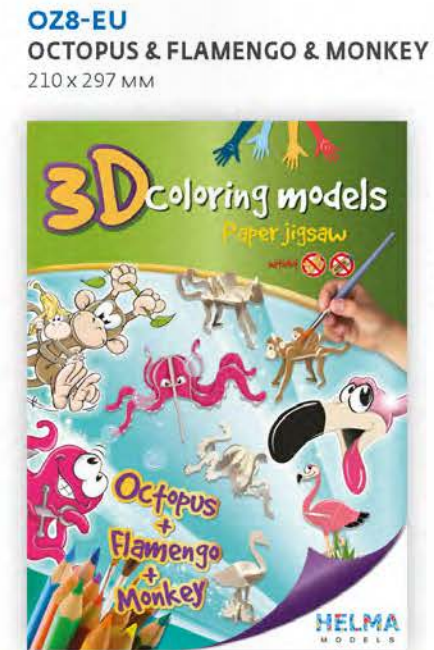
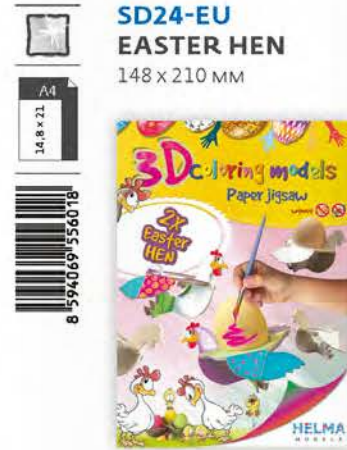
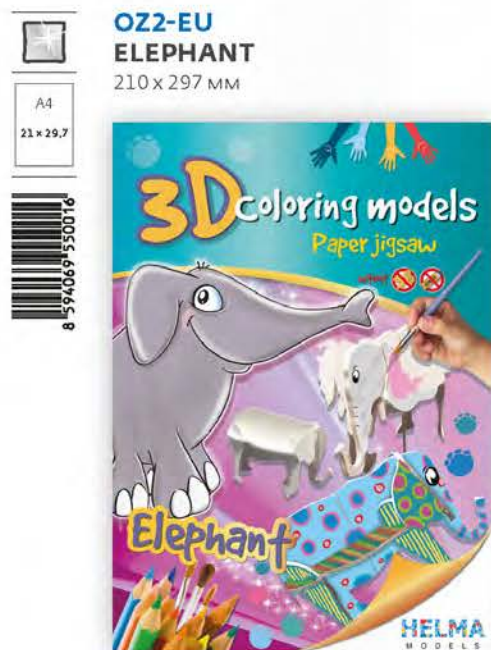
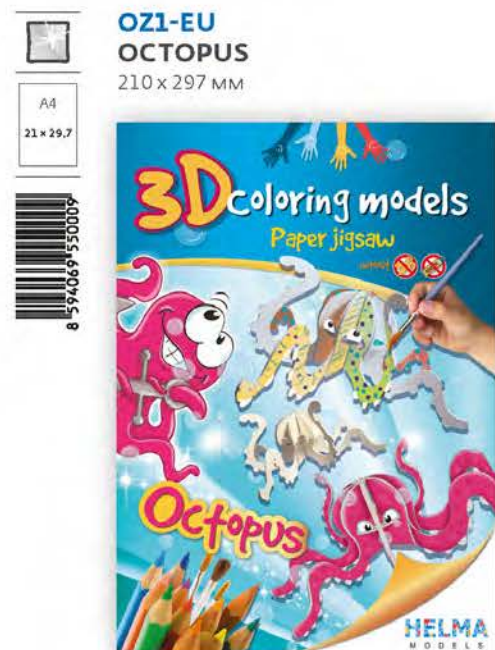
# 3D coloring models

Paper jigsaw





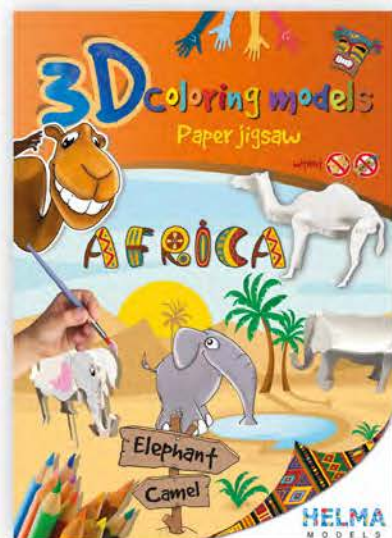
# 3D Coloring models





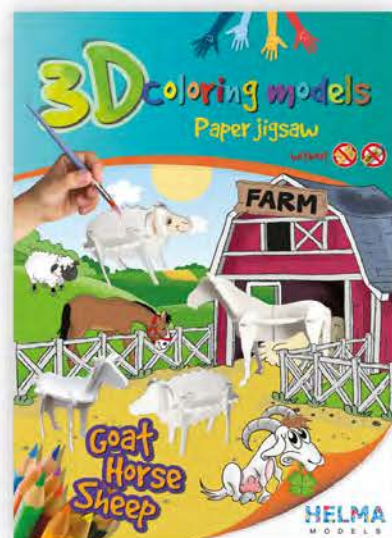
OZ12-EU  
AFRICA  
210 x 297 MM

A4  
21 x 29,7



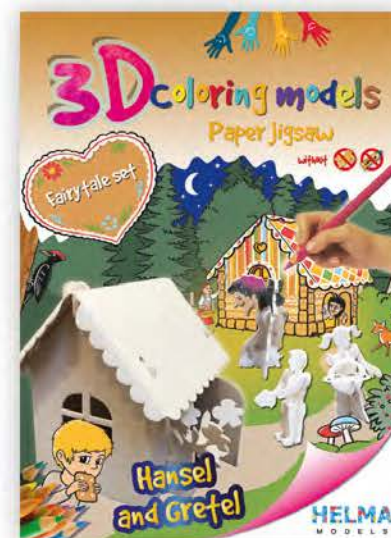
OZ13-EU  
FARM  
210 x 297 MM

A4  
21 x 29,7



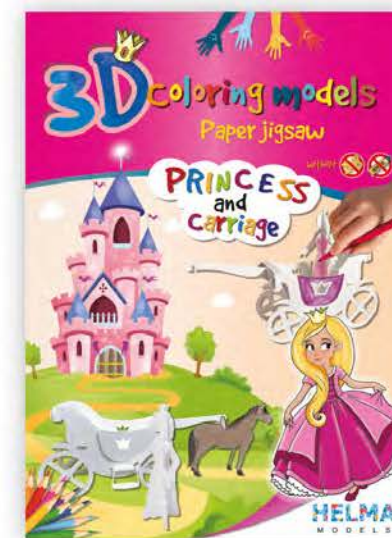
OZ19-EU  
HANSEL & GRETEL  
210 x 297 MM

A4  
21 x 29,7



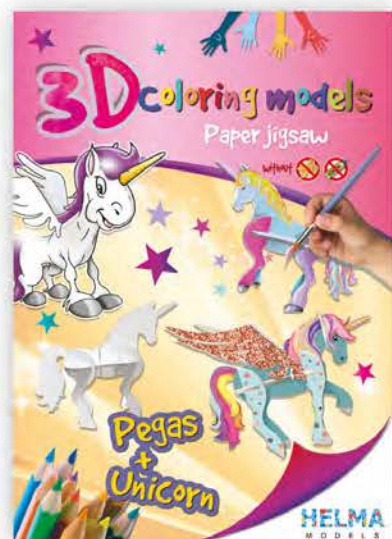
OZ20-EU  
PRINCESS & CARRIAGE  
210 x 297 MM

A4  
21 x 29,7



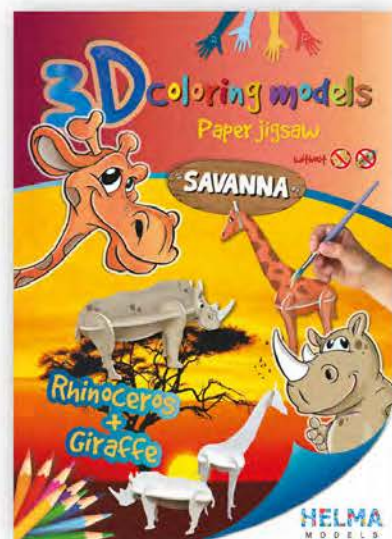
OZ14-EU  
PEGAS & UNICORN  
210 x 297 MM

A4  
21 x 29,7



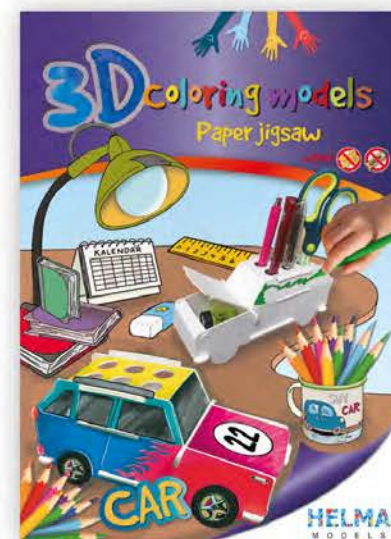
OZ16-EU  
SAVANA  
210 x 297 MM

A4  
21 x 29,7



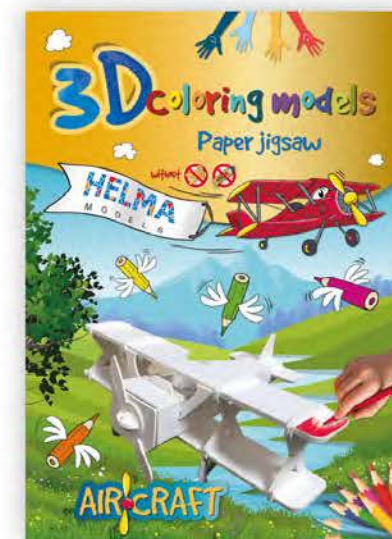
SD21-EU  
CAR  
210 x 297 MM

A4  
21 x 29,7



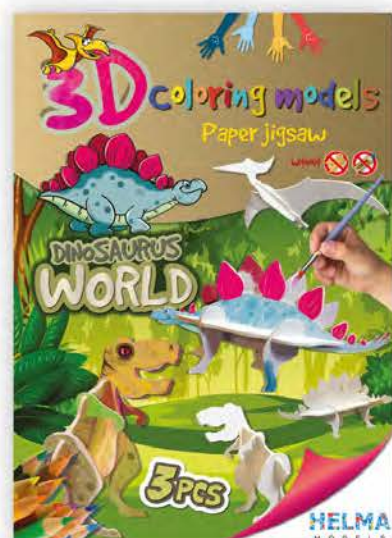
SD22-EU  
AIRCRAFT  
210 x 297 MM

A4  
21 x 29,7



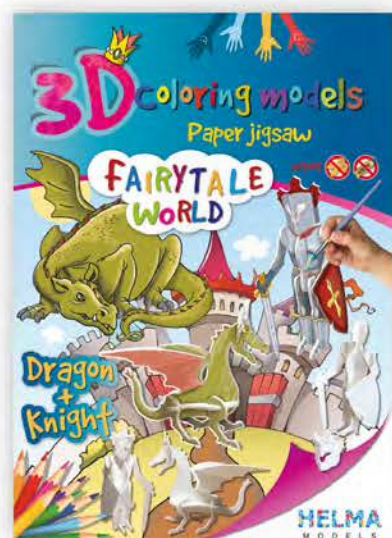
OD1-EU  
DINOSAURUS WORLD  
210 x 297 MM

A4  
21 x 29,7



OZ15-EU  
FAIRY TALE WORLD  
210 x 297 MM

A4  
21 x 29,7



THE MINIMUM ORDER QUANTITY IS 500 PCS / DESIGN. - DIE MINDESTBESTELLMENGE BETRÄGT 500 STÜCK / DESIGN.

3D coloring models





